

## beta Actin antibody

**Cat. No. GTX21801**

<b>Host</b>	Rabbit
<b>Clonality</b>	Polyclonal
<b>Isotype</b>	IgG
<b>Application</b>	WB, ICC/IF, IHC-P, ELISA
<b>Reactivity</b>	Human, Mouse, Frog

Reference ( 1 )

Package

100 µg

## APPLICATION

**Application Note**

\*Optimal dilutions/concentrations should be determined by the researcher.

Suggested dilution	Recommended dilution
WB	1:1000-1:4000
ICC/IF	1:500-1:2000
IHC-P	Assay dependent
ELISA	1:10000-1:40000

Not tested in other applications.

**Calculated MW** 42 kDa. ( [Note](#) )

## PROPERTIES

<b>Form</b>	Liquid
<b>Buffer</b>	20mM Potassium Phosphate, 150mM NaCl
<b>Preservative</b>	0.01% Sodium azide
<b>Storage</b>	Store as concentrated solution. Centrifuge briefly prior to opening vial. For short-term storage (1-2 weeks), store at 4°C. For long-term storage, aliquot and store at -20°C or below. Avoid multiple freeze-thaw cycles.
<b>Concentration</b>	1 mg/ml (Please refer to the vial label for the specific concentration.)
<b>Immunogen</b>	Synthetic peptide corresponding to C-Terminal region near amino acids 350-375 of Human beta Actin.
<b>Purification</b>	Purified by antigen-affinity chromatography.
<b>Conjugation</b>	Unconjugated

**Note**

For laboratory research use only. Not for any clinical, therapeutic, or diagnostic use in humans or animals. Not for animal or human consumption.

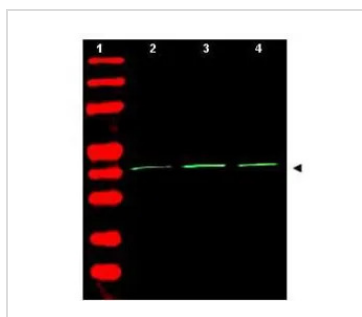
Purchasers shall not, and agree not to enable third parties to, analyze, copy, reverse engineer or otherwise attempt to determine the structure or sequence of the product.

For full product information, images and publications, please visit our [website](#).

**DATA IMAGES**

**GTX21801 WB Image**

Western Blot of Rabbit Anti-Beta Actin Antibody (GTX21801). Lane 1: molecular weight. Lane 2: human embryonic kidney 293. Lane 3: human lung carcinoma A549. Lane 4: mouse brain. Load: 35 µg per lane. Primary antibody: Beta Actin antibody at 1:1,500 for overnight at 4°C. Secondary antibody: infrared rabbit secondary antibody at 1:10,000 for 45 min at RT. Block: 5% BLOTTO overnight at 4°C. Predicted/Observed size: ~42 kDa corresponding to beta Actin (arrowhead). Other band(s): none


**GTX21801 WB Image**

WB analysis of various samples using GTX21801 beta Actin antibody.

Lane 1 : Protein ladder

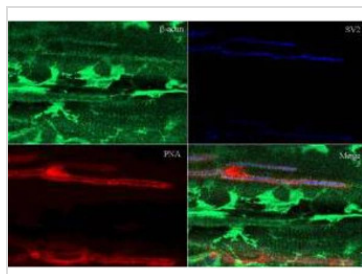
Lane 2 : 293T whole cell lysate

Lane 3 : A549 whole cell lysate

Lane 4 : Mouse brain tissue lysate

Loading : 35 µg

Dilution : 1:500


**GTX21801 IHC-P Image**

IHC-P analysis of rana pipiens tissue using GTX21801 beta Actin antibody.

Green : Primary antibody

Dilution : 1:200



For full product information, images and publications, please visit our [website](https://www.genetex.com).