

TIMP2 antibody [3A4]

Cat. No. GTX21828

Host	Mouse
Clonality	Monoclonal
Isotype	IgG2a
Application	WB, IHC-P
Reactivity	Human

Reference (4)

Package

250 µl

APPLICATION

Application Note

*Optimal dilutions/concentrations should be determined by the researcher.

Suggested dilution	Recommended dilution
WB	Assay dependent
IHC-P	1:25-1:50

Note : Recommendations for antigen retrieval : Citrate Buffer pH 6.0 at room temperature for 30 mins.

Not tested in other applications.

Calculated MW 24 kDa. ([Note](#))

PROPERTIES

Form	Liquid
Buffer	PBS
Preservative	0.09% Sodium azide
Storage	Store as concentrated solution. Centrifuge briefly prior to opening vial. Store at 4°C.
Concentration	Batch dependent (Please refer to the vial label for the specific concentration.)
Immunogen	BALB/C mice were injected with a synthetic peptide from the N-terminal region of human TIMP-2.
Purification	Purified IgG
Conjugation	Unconjugated

Note

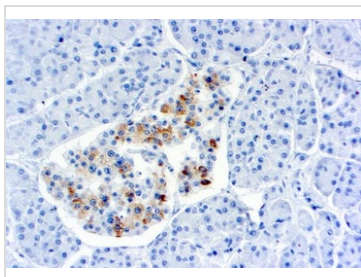
For laboratory research use only. Not for any clinical, therapeutic, or diagnostic use in humans or animals. Not for animal or human consumption.

Purchasers shall not, and agree not to enable third parties to, analyze, copy, reverse engineer or otherwise attempt to determine the structure or sequence of the product.



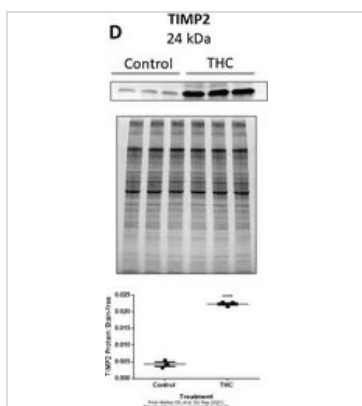
For full product information, images and publications, please visit our [website](#).

DATA IMAGES



GTx21828 IHC-P Image

IHC-P analysis of human colon carcinoma tissue using GTx21828 TIMP2 antibody [3A4].



GTx21828 WB Image

The data was published in the 2021 in Sci Rep. [PMID: 33597628](https://pubmed.ncbi.nlm.nih.gov/33597628/)



For full product information, images and publications, please visit our [website](https://www.genetex.com/).