

TIMP2 antibody [3A4]

Cat. No. GTX21828

| | |
|--------------|------------|
| Host | Mouse |
| Clonality | Monoclonal |
| Isotype | IgG2a |
| Applications | WB, IHC-P |
| Reactivity | Human |

References (4)

Package

250 µl

Applications

Application Note

*Optimal dilutions/concentrations should be determined by the researcher.

| Suggested dilution | Recommended dilution |
|--------------------|----------------------|
| WB | Assay dependent |
| IHC-P | 1:25-1:50 |

Note : Recommendations for antigen retrieval : Citrate Buffer pH 6.0

Not tested in other applications.

Calculated MW 24 kDa. ([Note](#))

Properties

| | |
|---------------|--|
| Form | Liquid |
| Buffer | PBS |
| Preservative | 0.09% Sodium azide |
| Storage | Store as concentrated solution. Centrifuge briefly prior to opening vial. Store at 4°C. |
| Concentration | Batch dependent (Please refer to the vial label for the specific concentration.) |
| Immunogen | BALB/C mice were injected with a synthetic peptide from the N-terminal region of human TIMP-2. |
| Purification | Purified IgG |
| Conjugation | Unconjugated |

Note

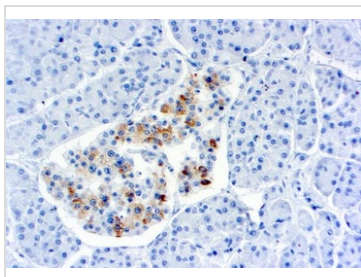
For laboratory research use only. Not for any clinical, therapeutic, or diagnostic use in humans or animals. Not for animal or human consumption.

Purchasers shall not, and agree not to enable third parties to, analyze, copy, reverse engineer or otherwise attempt to determine the structure or sequence of the product.



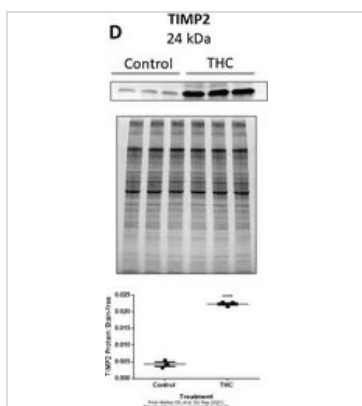
For full product information, images and publications, please visit our [website](#).

DATA IMAGES



GTX21828 IHC-P Image

IHC-P analysis of human colon carcinoma tissue using GTX21828 TIMP2 antibody [3A4].



GTX21828 WB Image

The data was published in the 2021 in Sci Rep. [PMID: 33597628](https://pubmed.ncbi.nlm.nih.gov/33597628/)



For full product information, images and publications, please visit our [website](https://www.genetex.com).