

## Myogenin antibody [F5D]

Cat. No. GTX21835

Host	Mouse
Clonality	Monoclonal
Isotype	IgG1
Applications	WB, IHC-P
Reactivity	Human, Mouse, Rat

References ( 5 )

Package

500 µl

## Applications

## Application Note

\*Optimal dilutions/concentrations should be determined by the researcher.

Suggested dilution	Recommended dilution
WB	Assay dependent
IHC-P	1:50-1:100

## Note : Recommendations for antigen retrieval : EDTA buffer pH 8.0

Not tested in other applications.

Calculated MW 33 kDa. ( [Note](#) )

## Properties

Form	Liquid
Buffer	Ascites
Preservative	0.09% Sodium azide
Storage	Store as concentrated solution. Centrifuge briefly prior to opening vial. Store at 4°C.
Immunogen	BALB/C mice were injected with recombinant protein containing rat myogenin amino acid 30-224.
Purification	Unpurified
Conjugation	Unconjugated

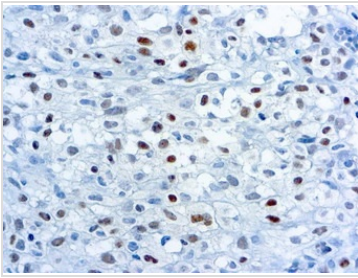
## Note

For laboratory research use only. Not for any clinical, therapeutic, or diagnostic use in humans or animals. Not for animal or human consumption.

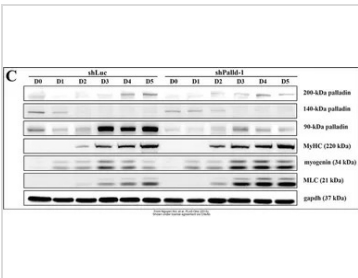
Purchasers shall not, and agree not to enable third parties to, analyze, copy, reverse engineer or otherwise attempt to determine the structure or sequence of the product.



For full product information, images and publications, please visit our [website](#).

**DATA IMAGES**

**GTx21835 IHC-P Image**

IHC-P analysis of human rhabdomyosarcoma tissue using GTx21835 Myogenin antibody [F5D].


**GTx21835 WB Image**

The data was published in the journal PLoS One in 2015. [PMID: 25875253](https://pubmed.ncbi.nlm.nih.gov/25875253/)



For full product information, images and publications, please visit our [website](https://www.genetex.com).