

Elastase antibody

Cat. No. GTX21876

Host	Rabbit
Clonality	Polyclonal
Isotype	IgG
Applications	WB, ICC/IF, ELISA, Multiplexing
Reactivity	Mouse

Package
100 µg

Applications

Application Note

*Optimal dilutions/concentrations should be determined by the researcher.

Suggested dilution	Recommended dilution
WB	1:500-1:3000
ICC/IF	Assay dependent
ELISA	1:5000-1:25000
Multiplexing	Assay dependent

Not tested in other applications.

Calculated MW 29 kDa. ([Note](#))

Properties

Form	Liquid
Buffer	20mM Potassium Phosphate, 150mM NaCl
Preservative	0.01% Sodium azide
Storage	Store as concentrated solution. Centrifuge briefly prior to opening vial. For short-term storage (1-2 weeks), store at 4°C. For long-term storage, aliquot and store at -20°C or below. Avoid multiple freeze-thaw cycles.
Concentration	10 mg/ml (Please refer to the vial label for the specific concentration.)
Immunogen	Elastase collected from porcine pancreas
Purification	IgG fraction This product is an IgG fraction antibody purified from monospecific antiserum by a multi-step process which includes delipidation, salt fractionation and ion exchange chromatography followed by extensive dialysis against the buffer stated above.
Conjugation	Unconjugated

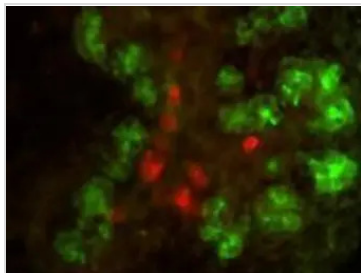
For full product information, images and publications, please visit our [website](#).

For laboratory research use only. Not for any clinical, therapeutic, or diagnostic use in humans or animals. Not for animal or human consumption.

Note

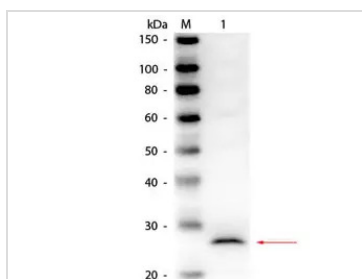
Purchasers shall not, and agree not to enable third parties to, analyze, copy, reverse engineer or otherwise attempt to determine the structure or sequence of the product.

DATA IMAGES



GTx21876 ICC/IF Image

Double immunofluorescence microscopy after staining of mouse embryonic gut tissue with anti-Elastase antibody and anti-Insulin antibody. Tissue sections were prepared using frozen sections after fixation for 1 h in 4% PFA. The image shows elastase staining in green and insulin staining in red. Personal communication, C. Murtaugh, Harvard University



GTx21876 WB Image

WB analysis of recombinant mouse elastase protein using GTx21876 Elastase antibody.

Loading : 50 ng

Dilution : 1:1000



For full product information, images and publications, please visit our [website](https://www.genetex.com).