

FYN antibody [FYN-01]

Cat. No. GTX21881

Host	Mouse
Clonality	Monoclonal
Isotype	IgG2b
Applications	WB, ICC/IF, IHC-P, IP
Reactivity	Human, Mouse

Package
100 µg

Applications

Application Note

*Optimal dilutions/concentrations should be determined by the researcher.

Suggested dilution	Recommended dilution
WB	Assay dependent
ICC/IF	Assay dependent
IHC-P	Assay dependent
IP	Assay dependent

Not tested in other applications.

Calculated MW 61 kDa. ([Note](#))

Properties

Form	Liquid
Buffer	PBS
Preservative	15mM Sodium azide
Storage	Store as concentrated solution. Centrifuge briefly prior to opening vial. Store at 4°C. DO NOT FREEZE.
Concentration	1 mg/ml (Please refer to the vial label for the specific concentration.)
Immunogen	Bacterially expressed recombinant fragment of human Fyn (aa 7-176).
Purification	Protein A purified
Conjugation	Unconjugated

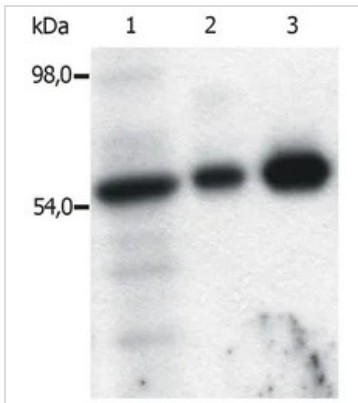
Note

For laboratory research use only. Not for any clinical, therapeutic, or diagnostic use in humans or animals. Not for animal or human consumption.

Purchasers shall not, and agree not to enable third parties to, analyze, copy, reverse engineer or otherwise attempt to determine the structure or sequence of the product.

For full product information, images and publications, please visit our [website](#).

DATA IMAGES

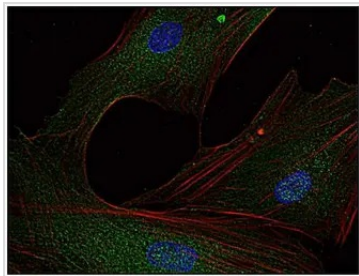


GTx21881 IP Image

IP analysis of T cells isolated from fresh buffy coats using GTx21881 FYN antibody [FYN-01]. Lanes differ in amount of T cell lysate loaded on the immunosorbent.

Lane 1 : Original lysate of T cells

Lane 2-3 : Immunoprecipitated material eluted from affinity sorbent (FYN-01 coupled to Sepharose beads)



GTx21881 ICC/IF Image

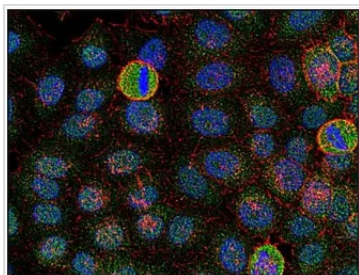
ICC/IF analysis of human primary fibroblasts using GTx21881 FYN antibody [FYN-01].

Green : Primary antibody

Red : Actin

Blue : DAPI

Dilution : 5µg/ml



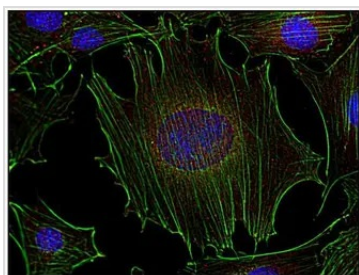
GTx21881 ICC/IF Image

ICC/IF analysis of HeLa cells using GTx21881 FYN antibody [FYN-01].

Green : Primary antibody

Red : Actin

Blue : DAPI



GTx21881 ICC/IF Image

ICC/IF analysis of mouse transformed fibroblasts using GTx21881 FYN antibody [FYN-01].

Green : Primary antibody

Red : Actin

Blue : DAPI



For full product information, images and publications, please visit our [website](https://www.genetex.com).