

5-Methylcytosine / 5-mC antibody

Cat. No. GTX21884

Host	Sheep
Clonality	Polyclonal
Isotype	IgG
Applications	WB, ICC/IF, FCM, IP, Dot, IHC
Reactivity	Species independent

References (5)

Package

250 µg

Applications

Application Note

*Optimal dilutions/concentrations should be determined by the researcher.

Suggested dilution	Recommended dilution
WB	1:1000
ICC/IF	Assay dependent
FCM	Assay dependent
IP	25-100 µg/ml
Dot	Assay dependent
Apuri	Assay dependent
IHC	10µg/ml

Not tested in other applications.

Properties

Form	Liquid
Buffer	PBS
Preservative	No preservatives
Storage	Store as concentrated solution. Centrifuge briefly prior to opening vial. For short-term storage (1-2 weeks), store at 4°C. For long-term storage, aliquot and store at -20°C or below. Avoid multiple freeze-thaw cycles.
Concentration	Batch dependent (Please refer to the vial label for the specific concentration.)
Immunogen	5-methyl Cytosine coupled to coupled to keyhole limpet hemocyanin (KLH)
Purification	Protein G Purified
Conjugation	Unconjugated



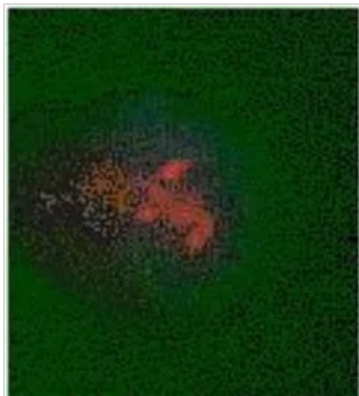
For full product information, images and publications, please visit our [website](#).

Note

For laboratory research use only. Not for any clinical, therapeutic, or diagnostic use in humans or animals. Not for animal or human consumption.

Purchasers shall not, and agree not to enable third parties to, analyze, copy, reverse engineer or otherwise attempt to determine the structure or sequence of the product.

DATA IMAGES



GTX21884 ICC/IF Image

ICC/IF analysis of rat neuron cells using GTX21884 5-Methylcytosine / 5-mC antibody.

Dilution : 5µg/ml



For full product information, images and publications, please visit our [website](#).