

BrdU antibody

Cat. No. GTX21893

Host	Sheep
Clonality	Polyclonal
Isotype	IgG
Applications	ICC/IF, IHC-P, IHC-Fr, IP, IHC
Reactivity	Species independent

References (17)

Package

125 µg

Applications

Application Note

*Optimal dilutions/concentrations should be determined by the researcher.

Suggested dilution	Recommended dilution
ICC/IF	Assay dependent
IHC-P	10 µg/ml
IHC-Fr	10 µg/ml
IP	25-100 µg/ml
IHC	10 µg/ml

Not tested in other applications.

Properties

Form	Liquid
Buffer	PBS
Preservative	No preservatives
Storage	Store as concentrated solution. Centrifuge briefly prior to opening vial. For short-term storage (1-2 weeks), store at 4°C. For long-term storage, aliquot and store at -20°C or below. Avoid multiple freeze-thaw cycles.
Concentration	Batch dependent (Please refer to the vial label for the specific concentration.)
Immunogen	BrdU coupled to KLH (Keyhole Limpet Hemocyanin)
Purification	Protein G Purified
Conjugation	Unconjugated

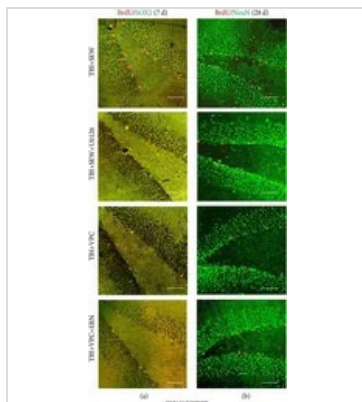
Note

For laboratory research use only. Not for any clinical, therapeutic, or diagnostic use in humans or animals. Not for animal or human consumption.

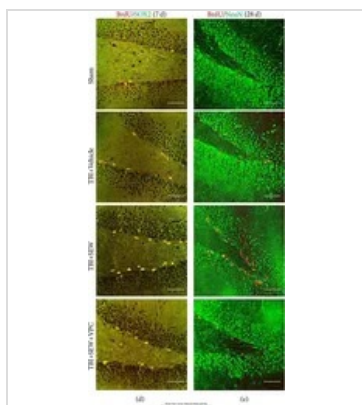
Purchasers shall not, and agree not to enable third parties to, analyze, copy, reverse engineer or otherwise attempt to determine the structure or sequence of the product.



For full product information, images and publications, please visit our [website](#).

DATA IMAGES

GTX21893 IHC-P Image

The data was published in the journal Neural Plast in 2016. [PMID: 28018679](https://pubmed.ncbi.nlm.nih.gov/28018679/)


GTX21893 IHC-P Image

The data was published in the journal Neural Plast in 2016. [PMID: 28018679](https://pubmed.ncbi.nlm.nih.gov/28018679/)



For full product information, images and publications, please visit our [website](https://www.genetex.com).