

TCR V beta 5 antibody [MEM-262]

Cat. No. GTX21898

Host	Mouse
Clonality	Monoclonal
Isotype	IgG2a
Applications	WB, FCM, IP
Reactivity	Human

Package
100 µg

Applications

Application Note

*Optimal dilutions/concentrations should be determined by the researcher.

Suggested dilution	Recommended dilution
WB	Assay dependent
FCM	Assay dependent
IP	Assay dependent

Not tested in other applications.

Product Note

This antibody recognizes beta chains of the TCR expressed by HPB-ALL cell line [carrying V(beta5.3)] and a small subset of peripheral blood T cells. This subset is larger than that recognized by other V(beta5.3)-specific antibodies.

Properties

Form	Liquid
Buffer	PBS
Preservative	15mM Sodium azide
Storage	Store as concentrated solution. Centrifuge briefly prior to opening vial. Store at 4°C. DO NOT FREEZE.
Concentration	1 mg/ml (Please refer to the vial label for the specific concentration.)
Immunogen	Human thymoma cell line HPB-ALL.
Purification	Protein A purified
Conjugation	Unconjugated

Note

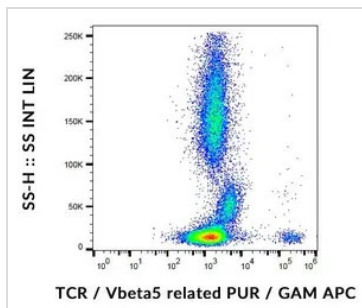
For laboratory research use only. Not for any clinical, therapeutic, or diagnostic use in humans or animals. Not for animal or human consumption.

Purchasers shall not, and agree not to enable third parties to, analyze, copy, reverse engineer or otherwise attempt to determine the structure or sequence of the product.



For full product information, images and publications, please visit our [website](#).

DATA IMAGES



GTX21898 FCM Image

FACS analysis of human peripheral blood using GTX21898 TCR V beta 5 antibody [MEM-262].



For full product information, images and publications, please visit our [website](#).