

## ADAM10 antibody

Cat. No. GTX21997

Host	Rabbit
Clonality	Polyclonal
Isotype	IgG
Applications	WB, ICC/IF, ELISA
Reactivity	Human, Mouse, Rat

Package  
100 µg

## Applications

## Application Note

\*Optimal dilutions/concentrations should be determined by the researcher.

Suggested dilution	Recommended dilution
WB	1 - 2 µg/mL
ICC/IF	2-10 µg/mL
ELISA	Assay dependent

Not tested in other applications.

Calculated MW	84 kDa. ( <a href="#">Note</a> )
Product Note	The immunogen sequence of this antibody is within the mature form of ADAM10.

## Properties

Form	Liquid
Buffer	PBS
Preservative	0.02% Sodium azide
Storage	Store as concentrated solution. Centrifuge briefly prior to opening vial. For short-term storage (1-2 weeks), store at 4°C. For long-term storage, aliquot and store at -20°C or below. Avoid multiple freeze-thaw cycles.
Concentration	1 mg/ml (Please refer to the vial label for the specific concentration.)
Immunogen	Synthetic peptide - amino acids 732-748 of Human ADAM10. This sequence is identical to those of bovine and rat origins and differs from that of mouse ADAM10 by one amino acid.
Purification	Protein A purified
Conjugation	Unconjugated



For full product information, images and publications, please visit our [website](#).

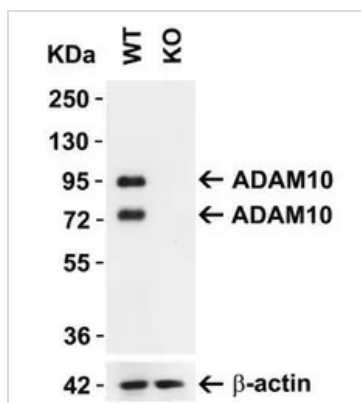
Date 2025 / 12 / 16 Page 1 of 2

For laboratory research use only. Not for any clinical, therapeutic, or diagnostic use in humans or animals. Not for animal or human consumption.

## Note

Purchasers shall not, and agree not to enable third parties to, analyze, copy, reverse engineer or otherwise attempt to determine the structure or sequence of the product.

## DATA IMAGES

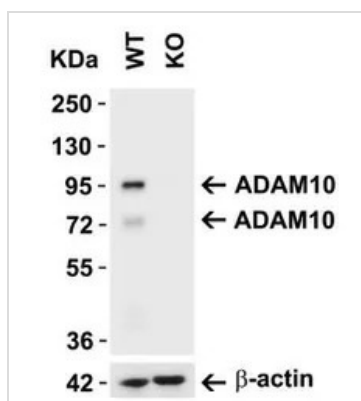


### GTX21997 WB Image

WB analysis of normal (WT) and knockout (KO) MEF cell lysates using GTX21997 ADAM10 antibody. It detected both precursor ADAM10 (94kDa) and mature ADAM10 (68kDa).

Dilution : 1µg/ml

Loading : 10µg per lane

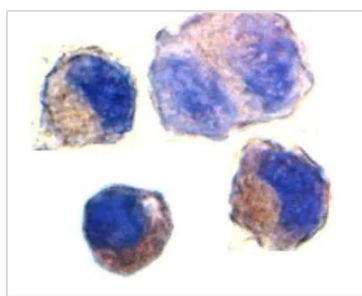


### GTX21997 WB Image

WB analysis of normal (WT) and knockout (KO) 293 cell lysates using GTX21997 ADAM10 antibody. It detected both precursor ADAM10 (94kDa) and mature ADAM10 (68kDa).

Dilution : 1µg/ml

Loading : 10µg per lane



### GTX21997 ICC/IF Image

ICC/IF analysis of K562 cells using GTX21997 ADAM10 antibody.

Working concentration : 2 µg/ml



For full product information, images and publications, please visit our [website](https://www.genetex.com).