

## APAF1 antibody

**Cat. No. GTX22000**

<b>Host</b>	Rabbit
<b>Clonality</b>	Polyclonal
<b>Isotype</b>	IgG
<b>Applications</b>	WB, IHC-P, ELISA
<b>Reactivity</b>	Human, Mouse, Rat

References ( 1 )  
 Package  
 100 µg

## Applications

**Application Note**

\*Optimal dilutions/concentrations should be determined by the researcher.

Suggested dilution	Recommended dilution
WB	1-10µg/ml
IHC-P	Assay dependent
ELISA	Assay dependent

Not tested in other applications.

**Calculated MW** 142 kDa. ([Note](#))

## Properties

<b>Form</b>	Liquid
<b>Buffer</b>	PBS
<b>Preservative</b>	0.02% Sodium azide
<b>Storage</b>	Store as concentrated solution. Centrifuge briefly prior to opening vial. For short-term storage (1-2 weeks), store at 4°C. For long-term storage, aliquot and store at -20°C or below. Avoid multiple freeze-thaw cycles.
<b>Concentration</b>	Batch dependent (Please refer to the vial label for the specific concentration.)
<b>Immunogen</b>	Peptide corresponding to aa 1158- 1177 of human Apaf1. This sequence differs from that of mouse Apaf1 by one amino acid.
<b>Purification</b>	Purified by affinity chromatography
<b>Conjugation</b>	Unconjugated

**Note**

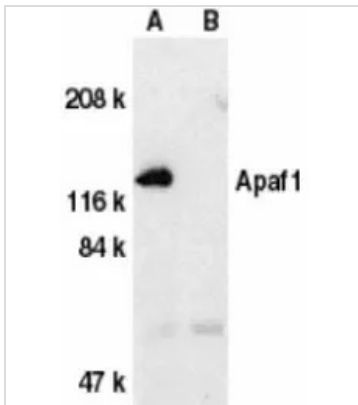
For laboratory research use only. Not for any clinical, therapeutic, or diagnostic use in humans or animals. Not for animal or human consumption.

Purchasers shall not, and agree not to enable third parties to, analyze, copy, reverse engineer or otherwise attempt to determine the structure or sequence of the product.

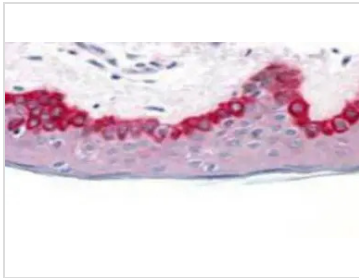


For full product information, images and publications, please visit our [website](#).

## DATA IMAGES

**GTX22000 WB Image**

Western blot analysis of Apaf1 in human heart tissue lysate with Apaf1 (CT) antibody (GTX22000) at 1 µg/ml in the absence (A) or presence (B) of blocking peptide.

**GTX22000 IHC-P Image**

Immunohistochemistry of Apaf1 in human skin tissue with Apaf1 (CT) antibody (GTX22000) at 20 µg/ml.



For full product information, images and publications, please visit our [website](#).