

APAF1 antibody

Cat. No. GTX22001

Host	Rabbit
Clonality	Polyclonal
Isotype	IgG
Applications	WB, ICC/IF, IHC-P, ELISA, IHC
Reactivity	Human, Mouse, Rat

References (1)

Package

100 µg

Applications

Application Note

*Optimal dilutions/concentrations should be determined by the researcher.

Suggested dilution	Recommended dilution
WB	1-2µg/ml
ICC/IF	Assay dependent
IHC-P	Assay dependent
ELISA	Assay dependent
IHC	1-2µg/ml

Not tested in other applications.

Calculated MW 142 kDa. ([Note](#))

Properties

Form	Liquid
Buffer	PBS
Preservative	0.02% Sodium azide
Storage	Store as concentrated solution. Centrifuge briefly prior to opening vial. For short-term storage (1-2 weeks), store at 4°C. For long-term storage, aliquot and store at -20°C or below. Avoid multiple freeze-thaw cycles.
Concentration	Batch dependent (Please refer to the vial label for the specific concentration.)
Immunogen	Peptide corresponding to aa 12-28 of human Apaf1. This sequence is identical in human and mouse.
Purification	Purified by affinity chromatography
Conjugation	Unconjugated



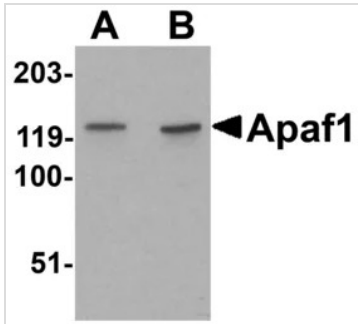
For full product information, images and publications, please visit our [website](#).

For laboratory research use only. Not for any clinical, therapeutic, or diagnostic use in humans or animals. Not for animal or human consumption.

Note

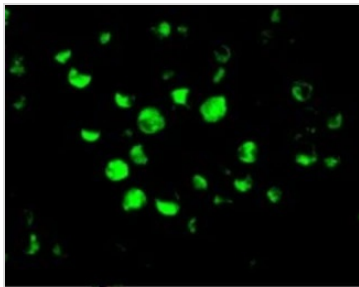
Purchasers shall not, and agree not to enable third parties to, analyze, copy, reverse engineer or otherwise attempt to determine the structure or sequence of the product.

DATA IMAGES



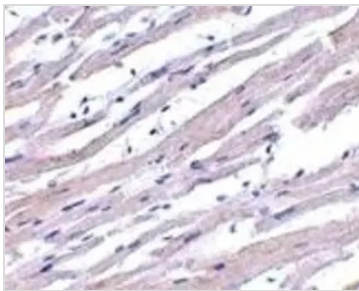
GTX22001 ICC/IF Image

ICC/IF analysis of K562 cells using GTX22001 APAF1 antibody.
Dilution : 10 µg/ml



GTX22001 WB Image

WB analysis of K562 cell lysate using GTX22001 APAF1 antibody.
Dilution : 1µg/ml (Lane A) and 2 µg/ml (Lane B)



GTX22001 IHC Image

Immunohistochemical staining of human heart with Rabbit anti APAF1 (GTX22001)



For full product information, images and publications, please visit our [website](https://www.genetex.com).