

## NOL3 antibody

Cat. No. GTX22002

<b>Host</b>	Rabbit
<b>Clonality</b>	Polyclonal
<b>Isotype</b>	IgG
<b>Applications</b>	WB, IHC-P, ELISA
<b>Reactivity</b>	Human

**Package**  
100 µg

## Applications

## Application Note

\*Optimal dilutions/concentrations should be determined by the researcher.

Suggested dilution	Recommended dilution
WB	1-10 µg/ml
IHC-P	Assay dependent
ELISA	Assay dependent

Not tested in other applications.

**Calculated MW** 24 kDa. ( [Note](#) )

## Properties

<b>Form</b>	Liquid
<b>Buffer</b>	PBS
<b>Preservative</b>	0.02% Sodium azide
<b>Storage</b>	Store as concentrated solution. Centrifuge briefly prior to opening vial. For short-term storage (1-2 weeks), store at 4°C. For long-term storage, aliquot and store at -20°C or below. Avoid multiple freeze-thaw cycles.
<b>Concentration</b>	Batch dependent (Please refer to the vial label for the specific concentration.)
<b>Immunogen</b>	Peptide corresponding to aa 191- 208 of human ARC.
<b>Purification</b>	Purified by affinity chromatography
<b>Conjugation</b>	Unconjugated

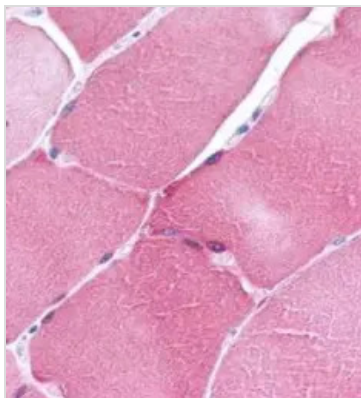
## Note

For laboratory research use only. Not for any clinical, therapeutic, or diagnostic use in humans or animals. Not for animal or human consumption.

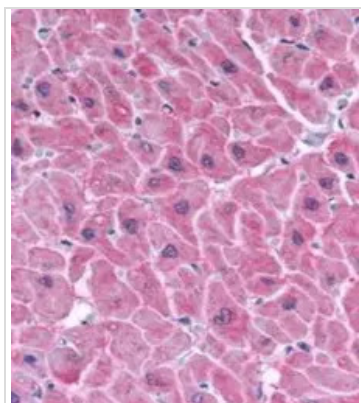
Purchasers shall not, and agree not to enable third parties to, analyze, copy, reverse engineer or otherwise attempt to determine the structure or sequence of the product.



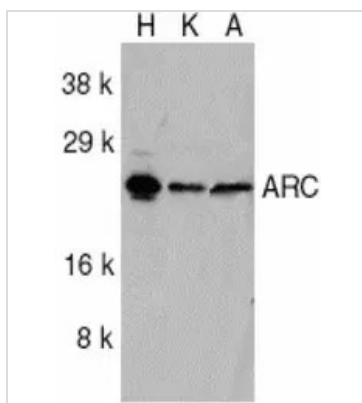
For full product information, images and publications, please visit our [website](#).

**DATA IMAGES**

**GTX22002 IHC-P Image**

Immunohistochemistry of ARC in human skeletal muscle (B) with ARC antibody (GTX22002) at 5 µg/ml.


**GTX22002 IHC-P Image**

Immunohistochemistry of ARC in human heart tissue (A) with ARC antibody (GTX22002) at 5 µg/ml.


**GTX22002 WB Image**

Western blot analysis of ARC in HeLa (H), KB (K), and A549 (A) whole cell lysates with ARC antibody (GTX22002) at 1ug/ml.



For full product information, images and publications, please visit our [website](https://www.genetex.com).