

Caspase 10 antibody

Cat. No. GTX22012

Host	Rabbit
Clonality	Polyclonal
Isotype	IgG
Applications	WB, ICC/IF, ELISA
Reactivity	Human

Package
100 µg

Applications

Application Note

*Optimal dilutions/concentrations should be determined by the researcher.

Suggested dilution	Recommended dilution
WB	1µg/ml
ICC/IF	Assay dependent
ELISA	Assay dependent

Not tested in other applications.

Calculated MW 59 kDa. ([Note](#))

Product Note This antibody recognizes full-length human caspase-10 (59kDa). Since the sequences at C- termini of FLICE2 and Mch4 are different, this antibody recognizes only the FLICE2 form of caspase-10.

Properties

Form	Liquid
Buffer	PBS
Preservative	0.02% Sodium azide
Storage	Store as concentrated solution. Centrifuge briefly prior to opening vial. For short-term storage (1-2 weeks), store at 4°C. For long-term storage, aliquot and store at -20°C or below. Avoid multiple freeze-thaw cycles.
Concentration	Batch dependent (Please refer to the vial label for the specific concentration.)
Immunogen	Peptide corresponding to aa 505-521 at C-terminus of human FLICE2 (accession no. AAD28402).
Purification	Purified by affinity chromatography
Conjugation	Unconjugated

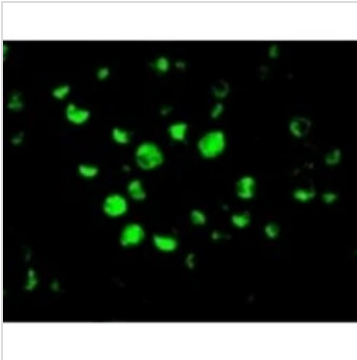


For full product information, images and publications, please visit our [website](#).

For laboratory research use only. Not for any clinical, therapeutic, or diagnostic use in humans or animals. Not for animal or human consumption.

Note

Purchasers shall not, and agree not to enable third parties to, analyze, copy, reverse engineer or otherwise attempt to determine the structure or sequence of the product.

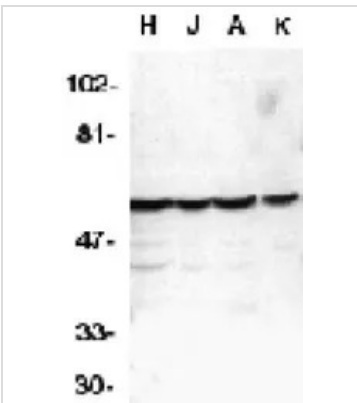
DATA IMAGES

GTx22012 ICC/IF Image

ICC/IF analysis of HeLa cells using GTx22012 Caspase 10 antibody.

Green : Primary antibody

Blue : DAPI

Dilution : 20 µg/ml


GTx22012 WB Image

Western blot analysis of Caspase-10 in HeLa (H), Jurkat (J), A431 (A), K562 (K) whole cell lysates with Caspase-10 antibody (GTx22012) at 1µg/ml.



For full product information, images and publications, please visit our [website](#).