

## MADD antibody

Cat. No. GTX22043

Host	Rabbit
Clonality	Polyclonal
Isotype	IgG
Applications	WB, ICC/IF, ELISA
Reactivity	Human, Mouse, Rat

Package  
100 µg

## Applications

## Application Note

\*Optimal dilutions/concentrations should be determined by the researcher.

Suggested dilution	Recommended dilution
WB	1:250-1:500
ICC/IF	Assay dependent
ELISA	Assay dependent

Not tested in other applications.

Calculated MW 183 kDa. ([Note](#))

## Properties

Form	Liquid
Buffer	PBS
Preservative	0.02% Sodium azide
Storage	Store as concentrated solution. Centrifuge briefly prior to opening vial. For short-term storage (1-2 weeks), store at 4°C. For long-term storage, aliquot and store at -20°C or below. Avoid multiple freeze-thaw cycles.
Concentration	Batch dependent (Please refer to the vial label for the specific concentration.)
Immunogen	Peptide corresponding to aa 1570-1588 of human MADD. This peptide sequence is identical to that of DENN and differs by one amino acid with rat GDP/GTP exchange protein RAB3-GEP.
Purification	Purified by affinity chromatography
Conjugation	Unconjugated

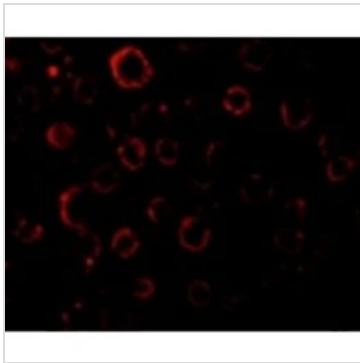
## Note

For laboratory research use only. Not for any clinical, therapeutic, or diagnostic use in humans or animals. Not for animal or human consumption.

Purchasers shall not, and agree not to enable third parties to, analyze, copy, reverse engineer or otherwise attempt to determine the structure or sequence of the product.

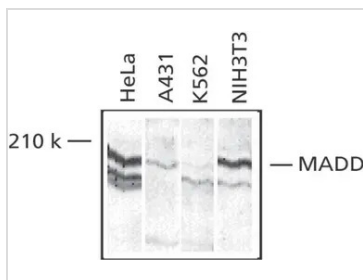


For full product information, images and publications, please visit our [website](#).

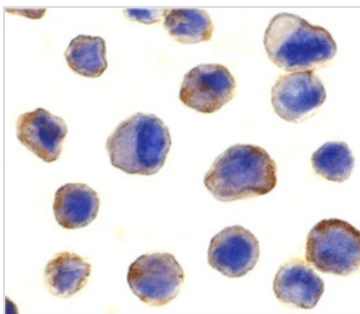
**DATA IMAGES**

**GTX22043 ICC/IF Image**

ICC/IF analysis of human spleen cells using GTX22043 MADD antibody.

Dilution : 10 µg/ml


**GTX22043 WB Image**

Western blot analysis of MADD in whole cell lysates from the indicated cell lines with Anti-MADD (GTX22043) at 1:250 dilution.


**GTX22043 ICC/IF Image**

ICC/IF analysis of HeLa cells using GTX22043 MADD antibody.

Dilution : 20 µg/ml



For full product information, images and publications, please visit our [website](https://www.genetex.com).