

CXCR4 antibody

Cat. No. GTX22074

Host	Rabbit
Clonality	Polyclonal
Isotype	IgG
Applications	WB, ICC/IF, IHC-P, IHC-Fr, FCM, ELISA, Neutralizing/Inhibition
Reactivity	Human, Mouse, Rat

References (9)

Package

50 µg

Applications

Application Note

*Optimal dilutions/concentrations should be determined by the researcher.

Suggested dilution	Recommended dilution
WB	1-2 µg/mL
ICC/IF	2-20 µg/mL
IHC-P	5 µg/mL
IHC-Fr	Assay dependent
FCM	0.1 µg/mL
ELISA	Assay dependent
Neutralizing/Inhibition	Assay dependent

Not tested in other applications.

Calculated MW 40 kDa. ([Note](#))**Product Note** CXCR4 Antibody is predicted to not cross-react with other CXCR family members.

Properties

Form	Liquid
Buffer	PBS
Preservative	0.02% Sodium azide
Storage	Store as concentrated solution. Centrifuge briefly prior to opening vial. For short-term storage (1-2 weeks), store at 4°C. For long-term storage, aliquot and store at -20°C or below. Avoid multiple freeze-thaw cycles.
Concentration	1 mg/ml (Please refer to the vial label for the specific concentration.)
Immunogen	Peptide sequence corresponding to amino acids 1-14 of human CD184.
Purification	Purified by antigen-affinity chromatography



For full product information, images and publications, please visit our [website](#).

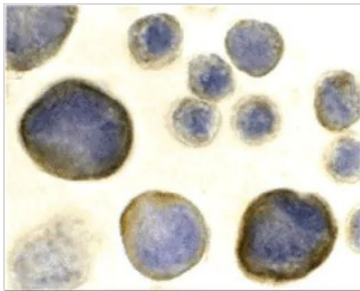
Conjugation

Unconjugated

Note

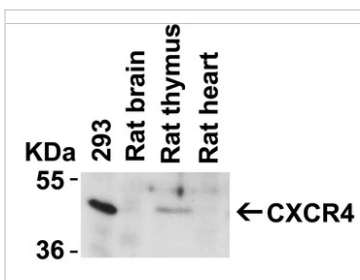
For laboratory research use only. Not for any clinical, therapeutic, or diagnostic use in humans or animals. Not for animal or human consumption.

Purchasers shall not, and agree not to enable third parties to, analyze, copy, reverse engineer or otherwise attempt to determine the structure or sequence of the product.

DATA IMAGES

GTX22074 ICC/IF Image

ICC/IF analysis of HeLa cells using GTX22074 CXCR4 antibody.

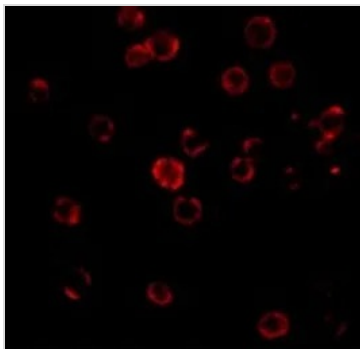
Working concentration : 2 µg/ml


GTX22074 WB Image

WB analysis of various sample lysates using GTX22074 CXCR4 antibody.

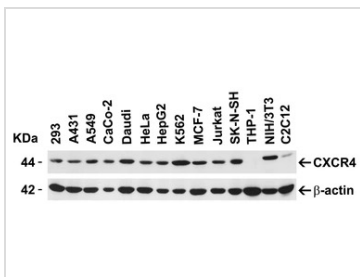
Loading : 20µg of lysates per lane

Dilution : 2 µg/ml


GTX22074 ICC/IF Image

ICC/IF analysis of HeLa cells using GTX22074 CXCR4 antibody.

Working concentration : 20 µg/ml


GTX22074 WB Image

WB analysis of various sample lysates using GTX22074 CXCR4 antibody.

Loading : 15µg of lysates per lane

Dilution : 1 µg/ml


 For full product information, images and publications, please visit our [website](https://www.genetex.com).