

# Cyclin B1 antibody

**Cat. No. GTX22096**

<b>Host</b>	Rabbit
<b>Clonality</b>	Polyclonal
<b>Isotype</b>	IgG
<b>Applications</b>	WB, IHC-P, IP, ELISA
<b>Reactivity</b>	Human

**Package**  
100 µl

## Applications

### Application Note

\*Optimal dilutions/concentrations should be determined by the researcher.

Suggested dilution	Recommended dilution
WB	1:500-1:1000
IHC-P	1:500
IP	1:100
ELISA	1:2000-1:10000

Not tested in other applications.

**Calculated MW** 48 kDa. ( [Note](#) )

**Product Note** No reaction was observed against other related cyclins.

## Properties

<b>Form</b>	Liquid
<b>Buffer</b>	Filtered-steriled serum
<b>Preservative</b>	0.01% Sodium azide
<b>Storage</b>	Store as concentrated solution. Centrifuge briefly prior to opening vial. For short-term storage (1-2 weeks), store at 4°C. For long-term storage, aliquot and store at -20°C or below. Avoid multiple freeze-thaw cycles.
<b>Immunogen</b>	Full length fusion protein corresponding to the human gene.
<b>Purification</b>	Unpurified
<b>Conjugation</b>	Unconjugated

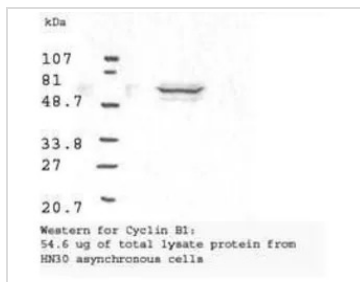
### Note

For laboratory research use only. Not for any clinical, therapeutic, or diagnostic use in humans or animals. Not for animal or human consumption.

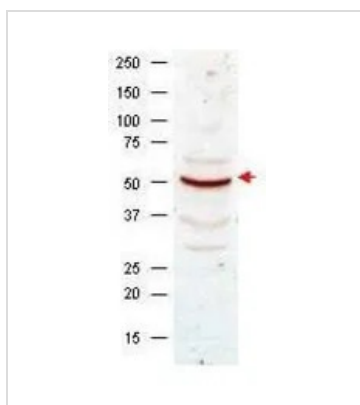
Purchasers shall not, and agree not to enable third parties to, analyze, copy, reverse engineer or otherwise attempt to determine the structure or sequence of the product.



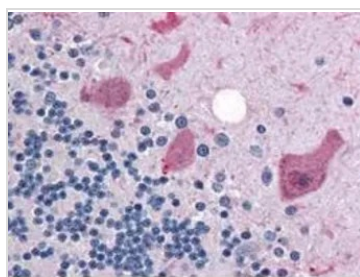
For full product information, images and publications, please visit our [website](#).

**DATA IMAGES**

**GTx22096 WB Image**

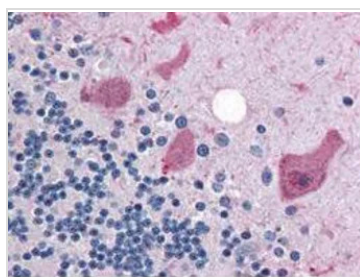
Western blot analysis using GeneTex Anti-Cyclin B1 antibody (GTx22096) shows detection of human Cyclin B1 present in asynchronous HN30 cell lysates. HN30 cells are from head and neck cancer tumors that over express cyclin B1 and D1. Comparison to a molecular weight marker indicates a band of ~62 kDa corresponding to the expected molecular weight for the protein. The blot was incubated with a 1:500 dilution of the antibody for 1 h at room temperature. Detection occurred using a 1:10,000 of HRP conjugated Goat anti Rabbit IgG GTx27090 and chemiluminescence reagent with a 1min exposure time.


**GTx22096 WB Image**

Western blot analysis using GeneTex Anti-Cyclin B1 antibody (GTx22096) shows detection of Cyclin B1 present in asynchronous HeLa cell lysates. Comparison to a molecular weight marker indicates a band of ~55 kDa corresponding to human Cyclin B1 (arrowhead). Approximately 50 µg of lysate was loaded on to a 7% SDS-PAGE gel for separation. After transfer to nitrocellulose, the blot was incubated with a 1:500 dilution of the antibody for 1 h at room temperature. Detection occurred using a 1:10,000 of HRP conjugated Goat anti Rabbit IgG (GTx27090).


**GTx22096 IHC-P Image**

GeneTex anti-Cyclin B1 antibody (GTx22096) was diluted 1:500 to detect Cyclin B1 in human brain cerebellum tissue. Tissue was formalin fixed and paraffin embedded. No pre-treatment of sample was required. The image shows the localization of antibody as the precipitated red signal, with a hematoxylin purple nuclear counter stain.


**GTx22096 IHC-P Image**

IHC-P analysis of human brain cerebellum tissue using GTx22096 Cyclin B1 antibody.  
Dilution : 1:500



For full product information, images and publications, please visit our [website](https://www.genetex.com).