

# AHR antibody

**Cat. No. GTX22100**

<b>Host</b>	Goat
<b>Clonality</b>	Polyclonal
<b>Isotype</b>	IgG
<b>Application</b>	ICC/IF, IHC-P, ChIP assay, Gel supershift assays
<b>Reactivity</b>	Human, Mouse, Rat

**Package**  
1 ml

## APPLICATION

### Application Note

\*Optimal dilutions/concentrations should be determined by the researcher.

Suggested dilution	Recommended dilution
ICC/IF	5 - 20 µg/ml
IHC-P	20 µg/ml
ChIP assay	Assay dependent
Gel supershift assays	Assay dependent

Not tested in other applications.

**Calculated MW** 95 kDa. ( [Note](#) )

## PROPERTIES

<b>Form</b>	Liquid
<b>Buffer</b>	Serum
<b>Preservative</b>	No preservative
<b>Storage</b>	Store as concentrated solution. Centrifuge briefly prior to opening vial. For short-term storage (1-2 weeks), store at 4°C. For long-term storage, aliquot and store at -20°C or below. Avoid multiple freeze-thaw cycles.
<b>Immunogen</b>	N-terminal sequence of Aryl hydrocarbon Receptor purified from C57BL/6J mice. [UniProt# P30561]
<b>Purification</b>	Unpurified
<b>Conjugation</b>	Unconjugated

### Note

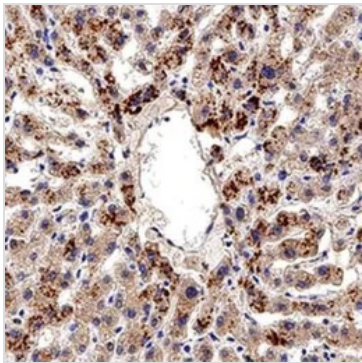
For laboratory research use only. Not for any clinical, therapeutic, or diagnostic use in humans or animals. Not for animal or human consumption.

Purchasers shall not, and agree not to enable third parties to, analyze, copy, reverse engineer or otherwise attempt to determine the structure or sequence of the product.



For full product information, images and publications, please visit our [website](#).

## DATA IMAGES

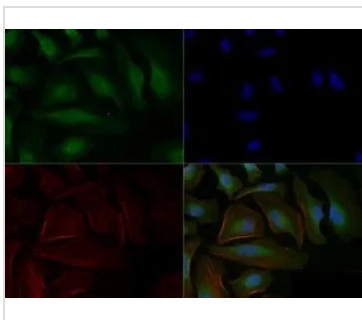


### GTX22100 IHC-P Image

IHC-P analysis of human liver tissue using GTX22100 AHR antibody.

Dilution : 20 µg/mL

Antigen retrieval : Heat induced antigen retrieval (HIER) using 10mM sodium citrate buffer (pH 6.0)



### GTX22100 ICC/IF Image

ICC/IF analysis of HeLa cells using GTX22100 AHR antibody.

Green : primary antibody

Red : Actin

Blue : DAPI

Dilution : 1:100

Fixation : 10% formalin

Permibilization : 0.5% Triton-X100



For full product information, images and publications, please visit our [website](https://www.genetex.com).