

# Lactate Dehydrogenase antibody

**Cat. No. GTX22101**

<b>Host</b>	Goat
<b>Clonality</b>	Polyclonal
<b>Isotype</b>	IgG
<b>Applications</b>	WB, ICC/IF, IP, ELISA
<b>Reactivity</b>	Human, Rabbit

References ( 1 )

Package

1 mg

## Applications

### Application Note

\*Optimal dilutions/concentrations should be determined by the researcher.

Suggested dilution	Recommended dilution
WB	1:1000-1:5000
ICC/IF	1:200
IP	1:100
ELISA	1:2000-1:10000

Not tested in other applications.

**Calculated MW** 37 kDa. ( [Note](#) )

## Properties

<b>Form</b>	Liquid
<b>Buffer</b>	20mM Potassium Phosphate, 150mM NaCl
<b>Preservative</b>	0.01% Sodium azide
<b>Storage</b>	Store as concentrated solution. Centrifuge briefly prior to opening vial. For short-term storage (1-2 weeks), store at 4°C. For long-term storage, aliquot and store at -20°C or below. Avoid multiple freeze-thaw cycles.
<b>Concentration</b>	10 mg/ml (Please refer to the vial label for the specific concentration.)
<b>Immunogen</b>	Full length lactate dehydrogenase protein isolated from rabbit muscle.
<b>Purification</b>	IgG fraction This product is an IgG fraction antibody purified from monospecific antiserum by a multi-step process which includes delipidation, salt fractionation and ion exchange chromatography followed by extensive dialysis against the buffer stated above.
<b>Conjugation</b>	Unconjugated



For full product information, images and publications, please visit our [website](#).

For laboratory research use only. Not for any clinical, therapeutic, or diagnostic use in humans or animals. Not for animal or human consumption.

## Note

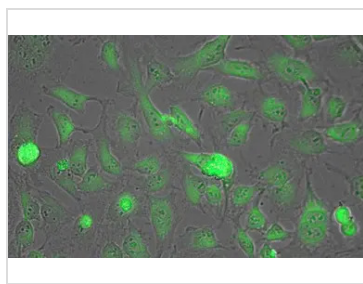
Purchasers shall not, and agree not to enable third parties to, analyze, copy, reverse engineer or otherwise attempt to determine the structure or sequence of the product.

## DATA IMAGES



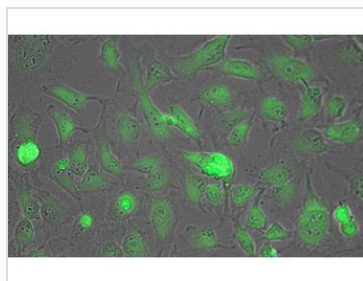
### GTX22101 WB Image

Western blot analysis of anti-Lactate Dehydrogenase antibody (1:1000 dilution) in HeLa cell extracts. Reactivity with LDH is observed in the cytoplasmic fraction (CF) and little to no reactivity in the nuclear fraction (NF). A single band of ~36 kDa corresponds to the expected molecular weight for the protein. Personal communication Kuldeep Patel.



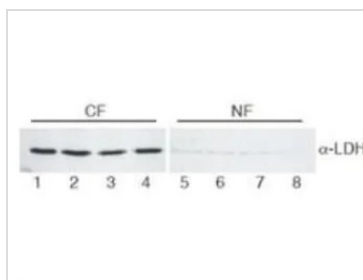
### GTX22101 ICC/IF Image

GeneTex biotinylated anti-lactate dehydrogenase antibody was used to stain MeOH/Acetone-fixed HeLa cells by immunofluorescence.



### GTX22101 ICC/IF Image

ICC/IF analysis of MeOH-fixed HeLa cells using GTX22101 Lactate Dehydrogenase antibody. Dilution : 1:200



### GTX22101 WB Image

WB analysis of HeLa whole cell lysate using GTX22101 Lactate Dehydrogenase antibody.  
Lane 1-4 : Cytoplasmic extracts (CF)  
Lane 5-8 : Nuclear extracts (NF)  
Loading : 30 µg  
Dilution : 1:400



For full product information, images and publications, please visit our [website](https://www.genetex.com).