

IL1 beta antibody

Cat. No. GTX22105

Host	Rabbit
Clonality	Polyclonal
Isotype	IgG
Applications	WB, IHC-P, IHC-Fr, FCM, IP, ELISA, Neutralizing/Inhibition
Reactivity	Human, Dog

References (4)

Package

100 µg

Applications

Application Note

*Optimal dilutions/concentrations should be determined by the researcher.

Suggested dilution	Recommended dilution
WB	1:1000
IHC-P	1:1:100-1:200
IHC-Fr	1:1:100-1:200
FCM	Assay dependent
IP	1:400-1:800
ELISA	1:500-1:2000
Neutralizing/Inhibition	1:100

Not tested in other applications.

Calculated MW 31 kDa. ([Note](#))

Product Note

Primarily directed against mature 17kDa human IL-1beta. In ELISA formats and other immunoreactive assays, the antibody will recognize 10% of the non-denatured (native) 31kDa IL-1beta precursor containing samples, but will detect all of the 17kDa mature molecule. Also detects primate IL-1beta in the same formats using similar dilutions. The antiserum does not recognize human IL-1alpha.

Properties

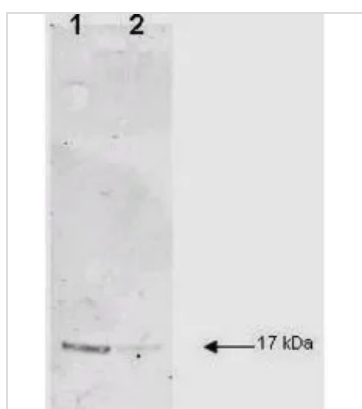
Form	Liquid
Buffer	20mM Potassium Phosphate, 150mM NaCl
Preservative	No preservatives
Storage	Store as concentrated solution. Centrifuge briefly prior to opening vial. For short-term storage (1-2 weeks), store at 4°C. For long-term storage, aliquot and store at -20°C or below. Avoid multiple freeze-thaw cycles.
Concentration	2 mg/ml (Please refer to the vial label for the specific concentration.)



For full product information, images and publications, please visit our [website](#).

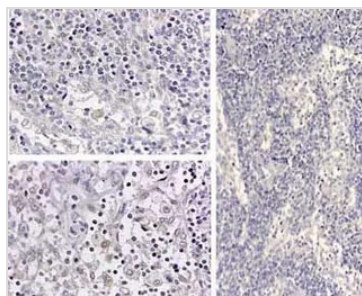
Immunogen	This antibody was prepared by repeated immunizations with recombinant human IL-1s produced in E.coli. The MW of the recombinant 153 aa IL-1s was 17 kDa with the N-terminal amino acid at position alanine 117. This cleavage site is generated by the IL-1s.
Purification	Purified by DEAE chromatography. From serum
Conjugation	Unconjugated
Note	For laboratory research use only. Not for any clinical, therapeutic, or diagnostic use in humans or animals. Not for animal or human consumption. Purchasers shall not, and agree not to enable third parties to, analyze, copy, reverse engineer or otherwise attempt to determine the structure or sequence of the product.

DATA IMAGES



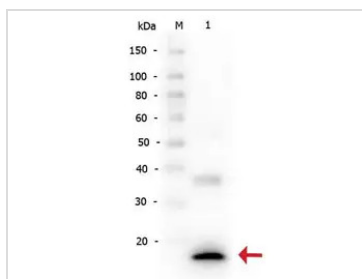
GTx22105 WB Image

GTx22105 was used at a 1:200 dilution incubated 1 h at room temperature to detect dog IL-1beta by Western blot. Lane 1 and 2 were loaded with 2.5 µg and 500 ng of dog IL-1beta respectively.



GTx22105 IHC-P Image

IHC-P analysis of medullary lymph node using IL1 beta antibody. Positive staining in the cytoplasm of circulating macrophages. Negative Control (far right) normal rabbit IgG.



GTx22105 WB Image

WB analysis of recombinant human IL1 beta protein using GTx22105 IL1 beta antibody.
Loading : 5 ng
Dilution : 1:2000



For full product information, images and publications, please visit our [website](https://www.genetex.com).