

## EasyBlot anti Rabbit IgG (HRP)

Cat. No. GTX221666-01

<b>Host</b>	Mouse
<b>Clonality</b>	Monoclonal
<b>Isotype</b>	IgG1
<b>Applications</b>	WB
<b>Reactivity</b>	Rabbit

References ( 74 )

★★★★★ Review ( 1 )

Package

250 µl, 50 µl

## PRODUCT

## Summary

EasyBlot anti-Rabbit IgG is an HRP-conjugated second step reagent that specifically reacts with the native, non-reduced form of rabbit IgG and does not bind the reduced, denatured form. Using Easyblot decreases the interference caused by the heavy (~50 kDa) and light chains (~25 kDa) of the IgG used for immunoprecipitation (IP). EasyBlot is simple to use and results in Western Blot detection of only the target band in your IP experiments. Exercise caution when using Protein A/G for IP with EasyBlot. Protein A/G contaminants bind to rabbit IgG with high affinity and may cause contaminating bands with a molecular weight similar to IgG heavy chain or light chain.

To minimize background from Protein A/G contamination, we strongly recommend the use of EasyBlot Kit anti-Rabbit IgG (Optimized for Prot A/G) (GTXGTX225856-01) or EasyBlocker (GTX425858) to minimize protein A/G contamination or you can use anti-Rabbit IgG Agarose beads (GTX27019) instead of Protein A/G.

## Applications

## Application Note

\*Optimal dilutions/concentrations should be determined by the researcher.

## Suggested dilution Recommended dilution

WB	1:1000
----	--------

**Note : Use 2-5 µg of the IP antibody; do not exceed 5 µg. Completely reduce all IP samples by 100mM DTT (fresh prepared). For further detail, please refer to the protocol.**

Not tested in other applications.

## Properties

<b>Form</b>	Liquid
<b>Buffer</b>	0.05M Tris, 0.15M NaCl, 1%BSA, 40% Glycerol
<b>Preservative</b>	0.005% Thimerosal
<b>Storage</b>	Store as concentrated solution. Centrifuge briefly prior to opening vial. For short-term storage (1-2 weeks), store at 4°C. For long-term storage, aliquot and store at -20°C or below. Avoid multiple freeze-thaw cycles.
<b>Concentration</b>	0.6 mg/ml (Please refer to the vial label for the specific concentration.)
<b>Purification</b>	Affinity purified by Protein G.
<b>Conjugation</b>	Horseradish peroxidase(HRP)

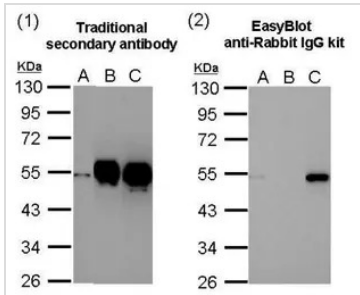


For full product information, images and publications, please visit our [website](#).

For laboratory research use only. Not for any clinical, therapeutic, or diagnostic use in humans or animals. Not for animal or human consumption.

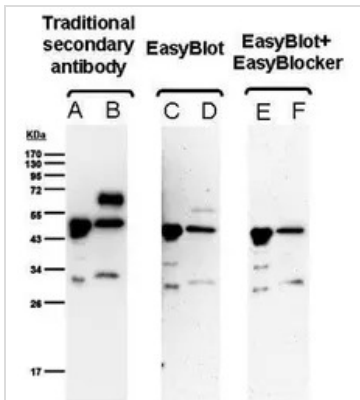
**Note**  
Purchasers shall not, and agree not to enable third parties to, analyze, copy, reverse engineer or otherwise attempt to determine the structure or sequence of the product.

DATA IMAGES



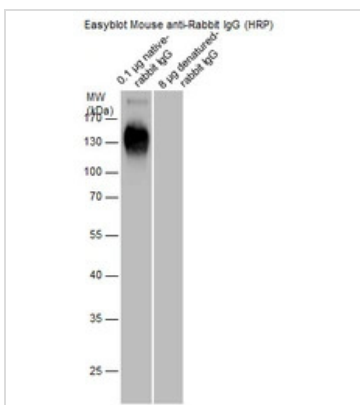
**GTX221666-01 WB Image**

Comparison of western blot analysis after immunoprecipitation with traditional secondary antibody (1) and EasyBlot anti-Rabbit IgG kit (GTX225856-01)(2). (A) Input, 20ug of HCT116 lysate. (B) and (C): HCT116 lysates were immunoprecipitated using 2.5 ug of normal rabbit IgG (B) or anti-p53 antibody (GTX102965) (C). The precipitated protein was detected by GTX102965 diluted at 1:10000.



**GTX221666-01 WB Image**

Comparison of western blot analysis after immunoprecipitation with traditional secondary antibody, EasyBlot anti-Rabbit IgG (HRP) (GTX221666-01) and EasyBlot anti-Rabbit IgG kit (GTX225856-01). A,C,and E: E. coli lysate with overexpressed GST-tagged protein B,D,and F: IP result IP and 1st antibody: anti-GST antibody



**GTX221666-01 WB Image**

EasyBlot anti Rabbit IgG (HRP) antibody detects native-rabbit IgG by western blot analysis.Recombinant Protein (8 and 0.1 µg) was separated by 10% SDS-PAGE, and the membrane was blotted with EasyBlot anti Rabbit IgG (HRP) antibody (GTX221666-01) at a dilution of 1:5000.



For full product information, images and publications, please visit our [website](#).