

## CD44 antibody [MEM-85]

Cat. No. GTX22212

Host	Mouse
Clonality	Monoclonal
Isotype	IgG2b
Applications	WB, FCM, IP, ELISA
Reactivity	Human

Package  
100 µg

## Applications

## Application Note

\*Optimal dilutions/concentrations should be determined by the researcher.

Suggested dilution	Recommended dilution
WB	Assay dependent
FCM	Assay dependent
IP	Assay dependent
ELISA	Assay dependent

Not tested in other applications.

Calculated MW 82 kDa. ( [Note](#) )

Product Note This antibody reacts with both cell surface-expressed and soluble form of CD44 antigen (Phagocyte glycoprotein 1).

## Properties

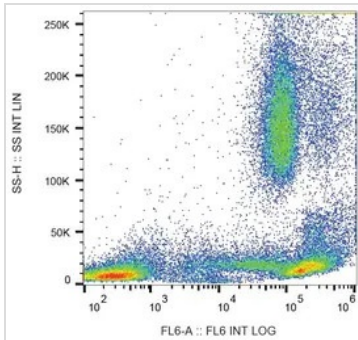
Form	Liquid
Buffer	PBS
Preservative	15mM Sodium azide
Storage	Store as concentrated solution. Centrifuge briefly prior to opening vial. Store at 4°C. DO NOT FREEZE.
Concentration	1 mg/ml (Please refer to the vial label for the specific concentration.)
Immunogen	Leukocytes of a patient suffering from LGL Type Leukaemia.
Purification	Protein A purified
Conjugation	Unconjugated

For full product information, images and publications, please visit our [website](#).

For laboratory research use only. Not for any clinical, therapeutic, or diagnostic use in humans or animals. Not for animal or human consumption.

**Note**

Purchasers shall not, and agree not to enable third parties to, analyze, copy, reverse engineer or otherwise attempt to determine the structure or sequence of the product.

**DATA IMAGES**

**GTX22212 FCM Image**

FACS analysis of human peripheral blood using GTX22212 CD44 antibody [MEM-85].



For full product information, images and publications, please visit our [website](#).