

ICAM1 / CD54 antibody [MEM-111]

Cat. No. GTX22213

Host	Mouse
Clonality	Monoclonal
Isotype	IgG2a
Applications	WB, IHC-P, FCM, ELISA
Reactivity	Human, Rat, Bovine

References (4)

Package

100 µg

Applications

Application Note

*Optimal dilutions/concentrations should be determined by the researcher.

Suggested dilution	Recommended dilution
WB	Assay dependent
IHC-P	Assay dependent
FCM	Assay dependent
ELISA	Assay dependent

Not tested in other applications.

Calculated MW 58 kDa. ([Note](#))

Observed MW (kDa) 58 or 85~110 kDa. The observed M.W. is based on the following publication. PMID: 24474243

Properties

Form	Liquid
Buffer	PBS
Preservative	15mM Sodium azide
Storage	Store as concentrated solution. Centrifuge briefly prior to opening vial. Store at 4°C. DO NOT FREEZE.
Concentration	1 mg/ml (Please refer to the vial label for the specific concentration.)
Immunogen	Raji human Burkitt's lymphoma cell line
Purification	Protein A purified
Conjugation	Unconjugated



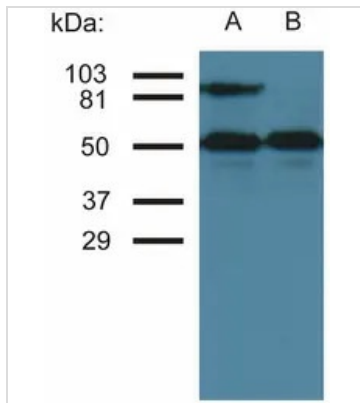
For full product information, images and publications, please visit our [website](#).

For laboratory research use only. Not for any clinical, therapeutic, or diagnostic use in humans or animals. Not for animal or human consumption.

Note

Purchasers shall not, and agree not to enable third parties to, analyze, copy, reverse engineer or otherwise attempt to determine the structure or sequence of the product.

DATA IMAGES



GTX22213 WB Image

WB analysis of TNF-alpha activated (A) and nonactivated (B) HUVEC cells using GTX22213 ICAM1 / CD54 antibody [MEM-111]. Lower bands represent tubulin as a loading control.



For full product information, images and publications, please visit our [website](https://www.genetex.com).