

CD9 antibody [MEM-61]

Cat. No. GTX22215

Host	Mouse
Clonality	Monoclonal
Isotype	IgG1
Applications	WB, ICC/IF, IHC-P, FCM, MS
Reactivity	Human

References (4)

Package

100 µg

Applications

Application Note

*Optimal dilutions/concentrations should be determined by the researcher.

Suggested dilution	Recommended dilution
WB	Assay dependent
ICC/IF	Assay dependent
IHC-P	Assay dependent
FCM	Assay dependent
MS	Assay dependent

Not tested in other applications.

Calculated MW 25 kDa. ([Note](#))

Product Note This antibody recognizes an epitope on second extracellular domain (EC2) of CD9 antigen.

Properties

Form	Liquid
Buffer	PBS
Preservative	15mM Sodium azide
Storage	Store as concentrated solution. Centrifuge briefly prior to opening vial. Store at 4°C. DO NOT FREEZE.
Concentration	1 mg/ml (Please refer to the vial label for the specific concentration.)
Immunogen	Pre-B cell line NALM-6.
Purification	Protein A purified
Conjugation	Unconjugated

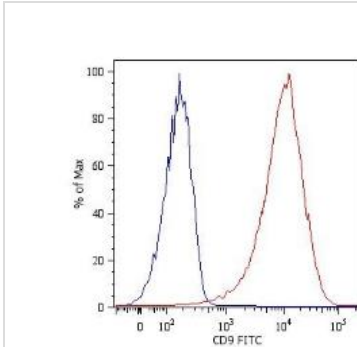


For full product information, images and publications, please visit our [website](#).

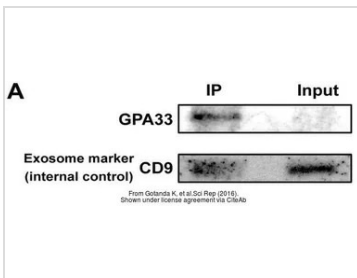
For laboratory research use only. Not for any clinical, therapeutic, or diagnostic use in humans or animals. Not for animal or human consumption.

Note

Purchasers shall not, and agree not to enable third parties to, analyze, copy, reverse engineer or otherwise attempt to determine the structure or sequence of the product.

DATA IMAGES

GTX22215 FCM Image

Surface staining of NALM-6 human pre-B cell leukemia cell line with anti-human CD9: FITC (GTX18241) . Total viable cells were used for analysis.


GTX22215 WB Image

The data was published in the journal Sci Rep in 2016. [PMID: 27571936](https://pubmed.ncbi.nlm.nih.gov/27571936/)



For full product information, images and publications, please visit our [website](https://www.genetex.com).