

## PSA antibody [A67-B/E3]

Cat. No. GTX22218

Host	Mouse
Clonality	Monoclonal
Isotype	IgG1
Applications	WB, IHC-P, ELISA
Reactivity	Human

**Package**  
100 µg

## Applications

## Application Note

\*Optimal dilutions/concentrations should be determined by the researcher.

Suggested dilution	Recommended dilution
WB	Assay dependent
IHC-P	Assay dependent
ELISA	Assay dependent

Not tested in other applications.

**Calculated MW** 29 kDa. ( [Note](#) )

## Properties

Form	Liquid
Buffer	PBS
Preservative	15mM Sodium azide
Storage	Store as concentrated solution. Centrifuge briefly prior to opening vial. Store at 4°C. DO NOT FREEZE.
Concentration	1 mg/ml (Please refer to the vial label for the specific concentration.)
Immunogen	30 KDa protein fraction prepared from human seminal plasma
Purification	Purified by precipitation and chromatography
Conjugation	Unconjugated

## Note

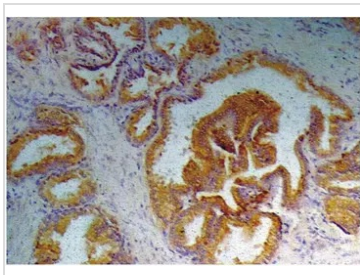
For laboratory research use only. Not for any clinical, therapeutic, or diagnostic use in humans or animals. Not for animal or human consumption.

Purchasers shall not, and agree not to enable third parties to, analyze, copy, reverse engineer or otherwise attempt to determine the structure or sequence of the product.



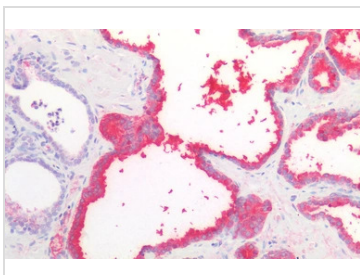
For full product information, images and publications, please visit our [website](#).

## DATA IMAGES



### GTx22218 IHC-P Image

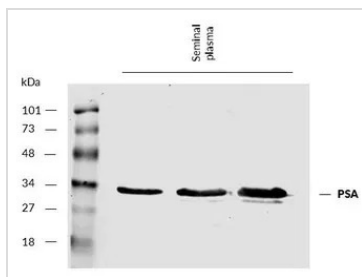
IHC-P analysis of prostate tissue using GTx22218 PSA antibody [A67-B/E3].



### GTx22218 IHC-P Image

IHC-P analysis of human prostate tissue using GTx22218 PSA antibody [A67-B/E3].

Dilution : 10µg/ml



### GTx22218 WB Image

WB analysis of human seminal plasma using GTx22218 PSA antibody [A67-B/E3].

Dilution: 5 µg/ml



For full product information, images and publications, please visit our [website](https://www.genetex.com).