

## Annexin II antibody

Cat. No. GTX22242

Host	Goat
Clonality	Polyclonal
Isotype	IgG
Applications	WB, ICC/IF, ELISA
Reactivity	Human, Mouse, Rat, Bovine, Pig

References ( 3 )

Package

50 µg

## Applications

## Application Note

Western Blot - Approx 35kDa band observed in wb. Recommended concentration: 0.5-3µg/ml.

Calculated MW 39 kDa. ( [Note](#) )

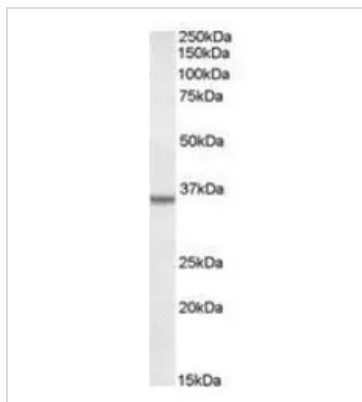
## Properties

Form	Liquid
Buffer	TBS, 0.5% BSA
Preservative	0.02% Sodium azide
Storage	Store as concentrated solution. Centrifuge briefly prior to opening vial. For short-term storage (1-2 weeks), store at 4°C. For long-term storage, aliquot and store at -20°C or below. Avoid multiple freeze-thaw cycles.
Concentration	0.5 mg/ml (Please refer to the vial label for the specific concentration.)
Immunogen	Peptide with sequence STVHEILCKLSLEGD, from N Terminus of the protein sequence according to NP_004030
Purification	IgG fraction Purified from goat serum by ammonium sulphate precipitation followed by antigen affinity chromatography using the immunizing peptide.
Conjugation	Unconjugated
Note	<p>For laboratory research use only. Not for any clinical, therapeutic, or diagnostic use in humans or animals. Not for animal or human consumption.</p> <p>Purchasers shall not, and agree not to enable third parties to, analyze, copy, reverse engineer or otherwise attempt to determine the structure or sequence of the product.</p>



For full product information, images and publications, please visit our [website](#).

## DATA IMAGES



### GTX22242 WB Image

Western blot analysis of Annexin II in A431 lysate (RIPA buffer, 35µg total protein per lane) using GTX22242 at 0.5µg/ml



For full product information, images and publications, please visit our [website](#).