

RAC2 antibody

Cat. No. GTX22244

Host	Goat
Clonality	Polyclonal
Isotype	IgG
Applications	WB, IHC-P
Reactivity	Human

References (3)

Package

50 µg

Applications

Application Note

*Optimal dilutions/concentrations should be determined by the researcher.

Suggested dilution	Recommended dilution
WB	0.1-0.3µg/ml
IHC-P	Assay dependent

Not tested in other applications.

Calculated MW 21 kDa. ([Note](#))

Properties

Form	Liquid
Buffer	TBS, 0.5% BSA
Preservative	0.02% Sodium azide
Storage	Store as concentrated solution. Centrifuge briefly prior to opening vial. For short-term storage (1-2 weeks), store at 4°C. For long-term storage, aliquot and store at -20°C or below. Avoid multiple freeze-thaw cycles.
Concentration	0.50 mg/ml (Please refer to the vial label for the specific concentration.)
Immunogen	Peptide with sequence PQPTRQQKRACSL, from the C Terminus of the protein sequence according to NP_002863.1.
Purification	Purified by ammonium sulphate precipitation followed by antigen affinity chromatography
Conjugation	Unconjugated

Note

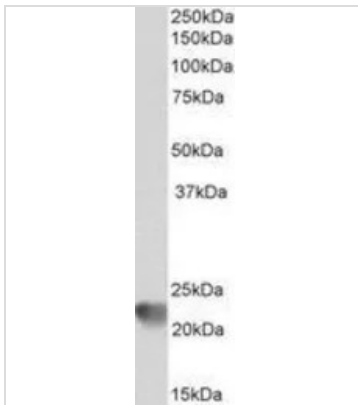
For laboratory research use only. Not for any clinical, therapeutic, or diagnostic use in humans or animals. Not for animal or human consumption.

Purchasers shall not, and agree not to enable third parties to, analyze, copy, reverse engineer or otherwise attempt to determine the structure or sequence of the product.



For full product information, images and publications, please visit our [website](#).

DATA IMAGES

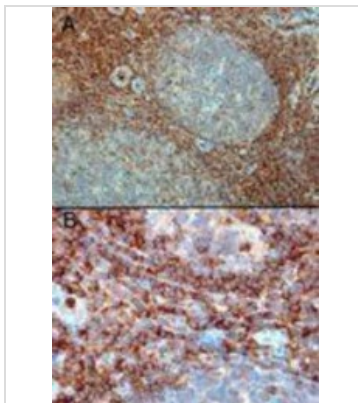


GTX22244 WB Image

WB analysis of Molt-4 cell lysate using GTX22244 RAC2 antibody.

Dilution : 0.3µg/ml

Loading : 35µg protein in RIPA buffer



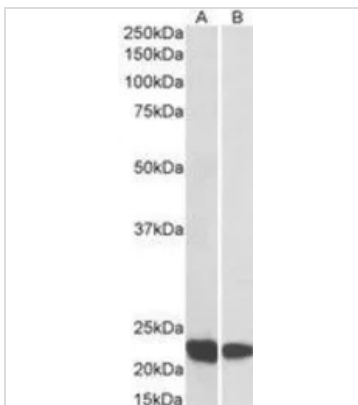
GTX22244 IHC-P Image

IHC-P analysis of human tonsil using GTX22244 RAC2 antibody.

Antigen retrieval : Tris/EDTA buffer pH 9

Dilution : 0.3µg/ml

A) Strong staining in the interfollicular area and mantle zone. B) Positive cells in the interfollicular area.



GTX22244 WB Image

WB analysis of human thymus (A) and tonsil (B) lysate using GTX22244 RAC2 antibody.

Dilution : 0.1µg/ml

Loading : 35µg protein in RIPA buffer



For full product information, images and publications, please visit our [website](https://www.genetex.com).