

## RACGAP1 antibody

Cat. No. GTX22270

Host	Goat
Clonality	Polyclonal
Isotype	IgG
Applications	WB, ICC/IF, IHC-P, FCM
Reactivity	Human

Package

50 µg

## Applications

## Application Note

\*Optimal dilutions/concentrations should be determined by the researcher.

Suggested dilution	Recommended dilution
WB	0.3-1µg/ml
ICC/IF	10µg/ml
IHC-P	1µg/ml
FCM	Assay dependent

**Note : Strong expression of the protein seen in the cytoplasm of MCF7 cells.****Human Testis, shows nuclear staining of many cells.**

Not tested in other applications.

Calculated MW	71 kDa. ( <a href="#">Note</a> )
Product Note	This antibody is expected to recognize all reported isoforms (NP_037409.2; NP_001306934.1; NP_001306935.1; NP_001306936.1). Reported variants represent identical protein: NP_001306928.1, NP_001119576.1, NP_037409.2, NP_001306931.1, NP_001306929.1, NP_001119575.1, NP_001306932.1, NP_001306930.1, NP_001306933.1

## Properties

Form	Liquid
Buffer	TBS, 0.5% BSA
Preservative	0.02% Sodium azide
Storage	Store as concentrated solution. Centrifuge briefly prior to opening vial. For short-term storage (1-2 weeks), store at 4°C. For long-term storage, aliquot and store at -20°C or below. Avoid multiple freeze-thaw cycles.
Concentration	0.50 mg/ml (Please refer to the vial label for the specific concentration.)
Immunogen	Peptide with sequence C-GRQGNFFASPMK, from the C Terminus of the protein sequence according to NP_037409.2; NP_001306934.1; NP_001306935.1; NP_001306936.1.
Purification	Purified by ammonium sulphate precipitation followed by antigen affinity chromatography



For full product information, images and publications, please visit our [website](#).

**Conjugation**

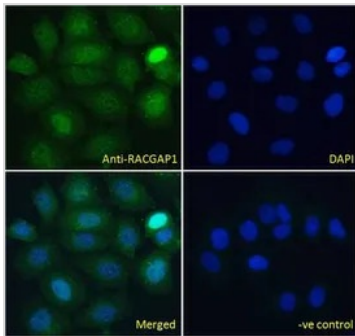
Unconjugated

**Note**

For laboratory research use only. Not for any clinical, therapeutic, or diagnostic use in humans or animals. Not for animal or human consumption.

Purchasers shall not, and agree not to enable third parties to, analyze, copy, reverse engineer or otherwise attempt to determine the structure or sequence of the product.

DATA IMAGES



**GTX22270 ICC/IF Image**

ICC/IF analysis of PFA fixed MCF7 cells using GTX22270 RACGAP1 antibody.

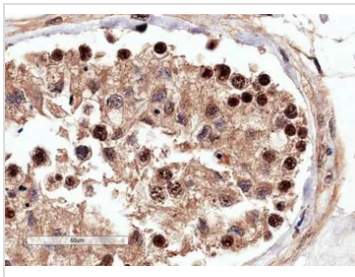
Green : Primary antibody

Blue : DAPI

Negative control : Unimmunized goat IgG

Permeabilization : 0.15% Triton

Dilution : 10µg/ml

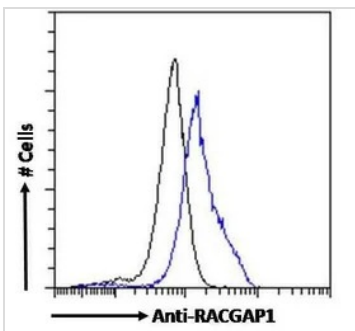


**GTX22270 IHC-P Image**

IHC-P analysis of human testis using GTX22270 RACGAP1 antibody.

Antigen retrieval : Tris/EDTA buffer pH 9

Dilution : 4µg/ml



**GTX22270 FCM Image**

FACS analysis of PFA fixed MCF7 cells using GTX22270 RACGAP1 antibody.

Blue : Primary antibody

Black : Isotype control

Permeabilization : 0.5% Triton

Dilution : 10µg/ml



For full product information, images and publications, please visit our [website](https://www.genetex.com).