

## Phosphothreonine antibody [18F6]

Cat. No. GTX22286

<b>Host</b>	Mouse
<b>Clonality</b>	Monoclonal
<b>Isotype</b>	IgG1
<b>Applications</b>	WB, ELISA
<b>Reactivity</b>	Species independent

Package

50 µl

## Applications

## Application Note

\*Optimal dilutions/concentrations should be determined by the researcher.

Suggested dilution	Recommended dilution
WB	1:500-1:2000
ELISA	1:4000-1:20000

Not tested in other applications.

## Product Note

Reactivity is specific for phosphothreonine and minimal cross reactivity is observed against phosphoserine or phosphotyrosine.

## Properties

<b>Form</b>	Liquid
<b>Buffer</b>	Steriled-filtered ascites
<b>Preservative</b>	0.01% Sodium azide
<b>Storage</b>	Store as concentrated solution. Centrifuge briefly prior to opening vial. For short-term storage (1-2 weeks), store at 4°C. For long-term storage, aliquot and store at -20°C or below. Avoid multiple freeze-thaw cycles.
<b>Immunogen</b>	Phosphothreonine conjugated KLH.
<b>Purification</b>	Unpurified
<b>Conjugation</b>	Unconjugated

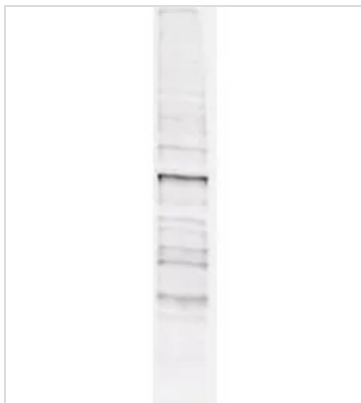
## Note

For laboratory research use only. Not for any clinical, therapeutic, or diagnostic use in humans or animals. Not for animal or human consumption.

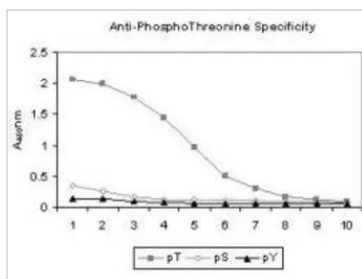
Purchasers shall not, and agree not to enable third parties to, analyze, copy, reverse engineer or otherwise attempt to determine the structure or sequence of the product.



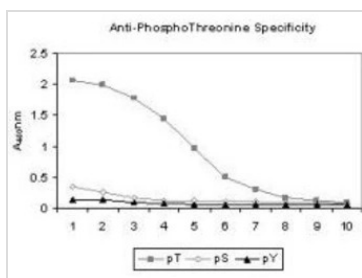
For full product information, images and publications, please visit our [website](#).

**DATA IMAGES**

**GTX22286 WB Image**

Mab anti-phosphothreonine antibody (clone 18F6, GTX22286) is shown to detect threonine phosphorylation of proteins in a lysate from A431 cells stimulated with EGF. Separation is achieved under reducing conditions using a pre-cast 4-20% iGel from Gradipore, Inc. A 1:1,000 dilution of Mab anti-phosphothreonine is used for 30 min followed by detection using 1:2,500 dilution Goat-a-Mouse IgG [H&L] secondary antibody and visualization using the OdysseyR Infrared Imaging System developed by LI-COR.


**GTX22286 ELISA Image**

ELISA results of Mab anti-phosphothreonine antibody (GTX22286) tested against BSA conjugates of pT, pY and pS. Each well was coated with 0.1µg of conjugate. The starting dilution of antibody was 1:1000 and each point on the X-axis represents a 2-fold dilution. HRP conjugated Gt-a-Mouse IgG (H&L) antibody and TMB substrate were used for detection.


**GTX22286 ELISA Image**

ELISA analysis of BSA-conjugated pT, pY and pS using serially diluted GTX22286 Phosphothreonine antibody [18F6].

Coating : 0.1 µg

Dilution : 1:1000


**GTX22286 WB Image**

WB analysis of EGF-treated A431 whole cell lysate using GTX22286 Phosphothreonine antibody [18F6].

Dilution : 1:1000



For full product information, images and publications, please visit our [website](http://www.genetex.com).