

Phosphotyrosine antibody [13F9]

Cat. No. GTX22287

Host	Mouse
Clonality	Monoclonal
Isotype	IgG1
Applications	WB, ELISA
Reactivity	Species independent

Package

50 µl

Applications

Application Note

*Optimal dilutions/concentrations should be determined by the researcher.

Suggested dilution	Recommended dilution
WB	1:500-1:2000
ELISA	1:4000-1:20000

Not tested in other applications.

Product Note

Reactivity is specific for phosphotyrosine and minimal cross reactivity is observed against phosphoserine or phosphothreonine.

Properties

Form	Liquid
Buffer	Steriled-filtered ascites
Preservative	0.01% Sodium azide
Storage	Store as concentrated solution. Centrifuge briefly prior to opening vial. For short-term storage (1-2 weeks), store at 4°C. For long-term storage, aliquot and store at -20°C or below. Avoid multiple freeze-thaw cycles.
Immunogen	Phosphotyrosine conjugated KLH.
Purification	Unpurified
Conjugation	Unconjugated

Note

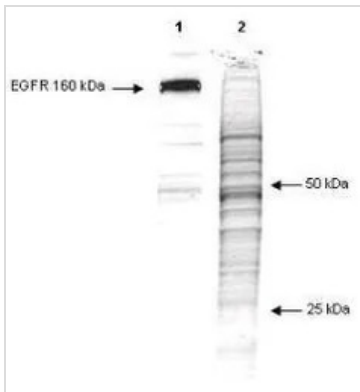
For laboratory research use only. Not for any clinical, therapeutic, or diagnostic use in humans or animals. Not for animal or human consumption.

Purchasers shall not, and agree not to enable third parties to, analyze, copy, reverse engineer or otherwise attempt to determine the structure or sequence of the product.



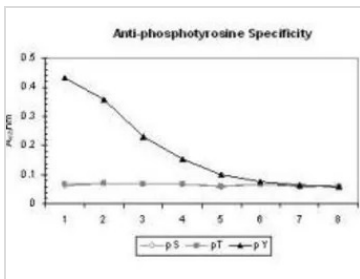
For full product information, images and publications, please visit our [website](#).

DATA IMAGES



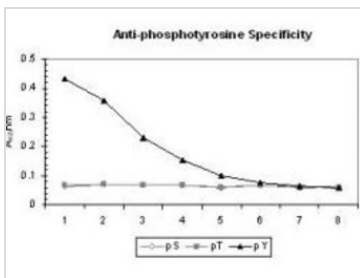
GTx22287 WB Image

Western Blot of Mouse anti-phosphotyrosine antibody (clone 13F9) (GTx22287). Lane 1: phosphorylated EGFR in an A431 cell lysate. Lane 2: total protein in the unstimulated A431 cells lysate after coomassie staining. Load: 10 µg per lane. Primary antibody: phosphotyrosine antibody at 1:1000 for 1 hr at RT. Secondary antibody: Goat-a-Mouse IgG [H&L] secondary antibody diluted 1:2,500 for 30' at room temperature. Block: 5% BLOTTO overnight at 4°C.



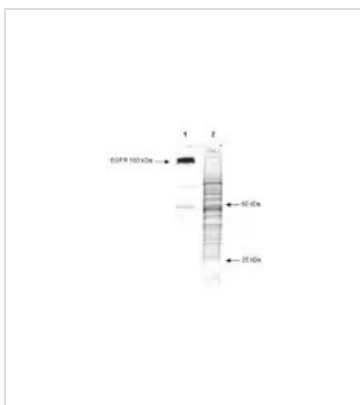
GTx22287 ELISA Image

ELISA of Mouse anti-phosphotyrosine antibody (GTx22287). Antigen: BSA conjugates of pT, pY and pS. Coating amount: 0.1 µg per well. Primary antibody: Phosphotyrosine antibody at 1:1000. Dilution series (X-axis): 2-fold. Secondary antibody: HRP conjugated Gt-a-Mouse IgG H&L secondary antibody at 1:20,000. Substrate: TMB



GTx22287 ELISA Image

ELISA analysis of BSA-conjugated pT, pY and pS using serially diluted GTx22287 Phosphotyrosine antibody [13F9].
Coating : 0.1 µg
Dilution : 1:1000



GTx22287 WB Image

WB analysis of various samples using GTx22287 Phosphotyrosine antibody [13F9].
Lane 1 : Phosphorylated EGFR in A431 whole cell lysate
Lane 2 : Unstimulated A431 whole cell lysate
Loading : 10 µg
Dilution : 1:1000



For full product information, images and publications, please visit our [website](https://www.genetex.com).