

# Caspase 3 (active) antibody

**Cat. No. GTX22302**

<b>Host</b>	Rabbit
<b>Clonality</b>	Polyclonal
<b>Isotype</b>	IgG
<b>Application</b>	WB, ICC/IF, IHC-P, IHC-Fr, IHC
<b>Reactivity</b>	Human, Mouse, Rat, Ferret

Reference ( 25 )  
Package  
50 µg

## APPLICATION

### Application Note

\*Optimal dilutions/concentrations should be determined by the researcher.

Suggested dilution	Recommended dilution
WB	1:50 - 1:500
ICC/IF	Assay dependent
IHC-P	Assay dependent
IHC-Fr	Assay dependent
IHC	1:10-1:20

Not tested in other applications.

**Calculated MW** 31.61 kDa. ( [Note](#) )

**Product Note** The antibody preferentially recognizes the p17 fragment of the active Caspase 3 .

## PROPERTIES

<b>Form</b>	Liquid
<b>Buffer</b>	PBS pH7.2, 30% Glycerol, 0.5% BSA, 5mM EDTA
<b>Preservative</b>	0.03% ProClin
<b>Storage</b>	Store as concentrated solution. Centrifuge briefly prior to opening vial. For short-term storage (1-2 weeks), store at 4°C. For long-term storage, aliquot and store at -20°C or below. Avoid multiple freeze-thaw cycles.
<b>Concentration</b>	0.5 mg/ml (Please refer to the vial label for the specific concentration.)
<b>Immunogen</b>	Synthetic peptide mapping to the N-terminus adjacent to the cleavage site of human caspase-3
<b>Purification</b>	Purified by affinity chromatography
<b>Conjugation</b>	Unconjugated



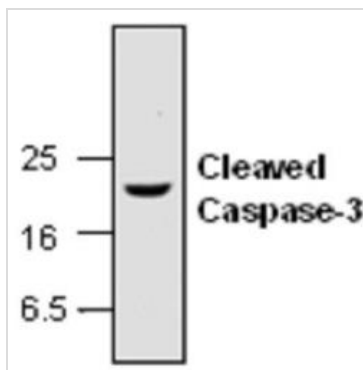
For full product information, images and publications, please visit our [website](#).

For laboratory research use only. Not for any clinical, therapeutic, or diagnostic use in humans or animals. Not for animal or human consumption.

**Note**

Purchasers shall not, and agree not to enable third parties to, analyze, copy, reverse engineer or otherwise attempt to determine the structure or sequence of the product.

## DATA IMAGES



### GTX22302 WB Image

WB analysis of Jurkat cells treated with camptothecin (2  $\mu$ M) using GTX22302 Caspase 3 (active) antibody.



For full product information, images and publications, please visit our [website](#).