

## Caspase 9 (active) antibody

**Cat. No. GTX22324**

<b>Host</b>	Rabbit
<b>Clonality</b>	Polyclonal
<b>Isotype</b>	IgG
<b>Application</b>	WB, ICC/IF, IP
<b>Reactivity</b>	Human

Reference ( 3 )  
Package  
50 µg

### APPLICATION

#### Application Note

\*Optimal dilutions/concentrations should be determined by the researcher.

Suggested dilution	Recommended dilution
WB	0.5-4 µg/ml
ICC/IF	Assay dependent
IP	10-20 µg/ml

Not tested in other applications.

**Calculated MW** 50 kDa. ( [Note](#) )

**Product Note** This antibody recognizes only the cleaved caspase 9 (37 kDa). It does not recognize full-length caspase 9 or any other caspase.

### PROPERTIES

<b>Form</b>	Liquid
<b>Buffer</b>	PBS, 50% Glycerol, 0.5% BSA
<b>Preservative</b>	0.02% Thimerosal
<b>Storage</b>	Store as concentrated solution. Centrifuge briefly prior to opening vial. For short-term storage (1-2 weeks), store at 4°C. For long-term storage, aliquot and store at -20°C or below. Avoid multiple freeze-thaw cycles.
<b>Concentration</b>	0.2 mg/ml (Please refer to the vial label for the specific concentration.)
<b>Immunogen</b>	Synthetic peptide mapping to the N-terminus adjacent to Asp330 of human caspase-9
<b>Purification</b>	Purified by affinity chromatography
<b>Conjugation</b>	Unconjugated



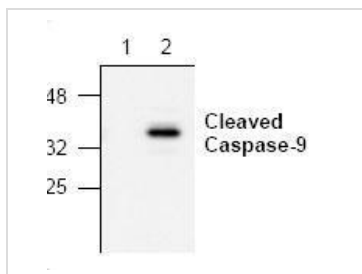
For full product information, images and publications, please visit our [website](#).

For laboratory research use only. Not for any clinical, therapeutic, or diagnostic use in humans or animals. Not for animal or human consumption.

**Note**

Purchasers shall not, and agree not to enable third parties to, analyze, copy, reverse engineer or otherwise attempt to determine the structure or sequence of the product.

## DATA IMAGES



### GTX22324 WB Image

WB analysis of (1) untreated and (2) Etoposide treated Jurkat cell lysate using GTX22324 Caspase 9 (active) antibody.



For full product information, images and publications, please visit our [website](#).