

VEGF Receptor 1 antibody

Cat. No. GTX22350

Host	Rabbit
Clonality	Polyclonal
Isotype	IgG
Application	IHC-P
Reactivity	Human

Package
500 µl

APPLICATION

Application Note

*Optimal dilutions/concentrations should be determined by the researcher.

Suggested dilution	Recommended dilution
IHC-P	1:25-1:50

Note : Recommendations for antigen retrieval : Citrate Buffer pH 6.0 at room temperature for 30 mins.

Not tested in other applications.

Calculated MW 151 kDa. ([Note](#))

PROPERTIES

Form	Liquid
Buffer	PBS
Preservative	0.09% Sodium azide
Storage	Store as concentrated solution. Centrifuge briefly prior to opening vial. Store at 4°C.
Concentration	Batch dependent (Please refer to the vial label for the specific concentration.)
Immunogen	A synthetic peptide derived from the C-terminus of the Flt-1 precursor of human origin.
Purification	Purified IgG
Conjugation	Unconjugated

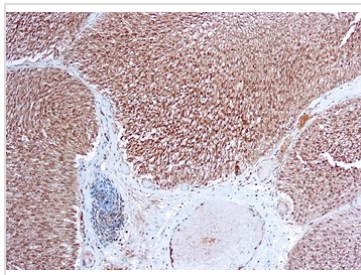
Note

For laboratory research use only. Not for any clinical, therapeutic, or diagnostic use in humans or animals. Not for animal or human consumption.

Purchasers shall not, and agree not to enable third parties to, analyze, copy, reverse engineer or otherwise attempt to determine the structure or sequence of the product.



For full product information, images and publications, please visit our [website](#).

DATA IMAGES

GTX22350 IHC-P Image

IHC-P analysis of human angiosarcoma tissue using GTX22350 VEGF Receptor 1 antibody.



For full product information, images and publications, please visit our [website](#).