

## MVP/LRP antibody [1032]

Cat. No. GTX22376

Host	Mouse
Clonality	Monoclonal
Isotype	IgG1
Applications	WB, IHC-P, IP, IHC
Reactivity	Human, Rat

Package  
500 µl

## Applications

## Application Note

\*Optimal dilutions/concentrations should be determined by the researcher.

Suggested dilution	Recommended dilution
WB	Assay dependent
IHC-P	Assay dependent
IP	Assay dependent
IHC	Assay dependent

Not tested in other applications.

Calculated MW 99 kDa. ( [Note](#) )

## Properties

Form	Liquid
Buffer	PBS
Preservative	0.09% Sodium azide
Storage	Store as concentrated solution. Centrifuge briefly prior to opening vial. Store at 4°C.
Concentration	Batch dependent (Please refer to the vial label for the specific concentration.)
Immunogen	Proteins precipitated with AER317 from the phosphocellulose column flow through of extract of human breast cancer MCF-7 cells.
Purification	Purified IgG
Conjugation	Unconjugated

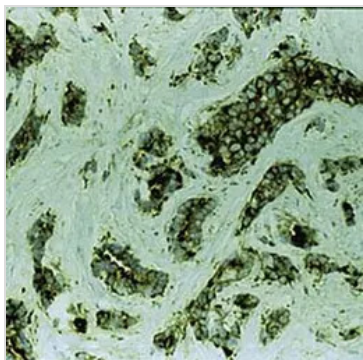
## Note

For laboratory research use only. Not for any clinical, therapeutic, or diagnostic use in humans or animals. Not for animal or human consumption.

Purchasers shall not, and agree not to enable third parties to, analyze, copy, reverse engineer or otherwise attempt to determine the structure or sequence of the product.

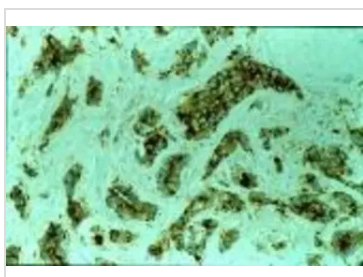
For full product information, images and publications, please visit our [website](#).

## DATA IMAGES



### GTx22376 IHC-P Image

Formalin fixed paraffin embedded human breast carcinoma stained with LRP/MVP antibody (GTx22376).



### GTx22376 IHC Image

IHC Image using GTx22376 - Detection of MVP by IHC in Human Breast Carcinoma



For full product information, images and publications, please visit our [website](#).