

Mesothelioma antibody [HBME-1]

Cat. No. GTX22383

Host	Mouse
Clonality	Monoclonal
Isotype	IgM
Applications	IHC-P
Reactivity	Human

Package
500 µl

Applications

Application Note

*Optimal dilutions/concentrations should be determined by the researcher.

Suggested dilution	Recommended dilution
IHC-P	1:15-1:25

Note : Recommendations for antigen retrieval : Citrate Buffer pH 6.0

Not tested in other applications.

Product Note

This antibody reacts with an unknown antigen on microvilli of mesothelioma cells. It stains normal mesothelial cells as well as epithelial mesotheliomas in a thick membrane pattern due to abundant lung microvilli on the surface of these cells.

Properties

Form	Liquid
Buffer	PBS
Preservative	0.09% Sodium azide
Storage	Store as concentrated solution. Centrifuge briefly prior to opening vial. Store at 4°C.
Concentration	Batch dependent (Please refer to the vial label for the specific concentration.)
Immunogen	BALB/C mice were injected with suspension of human mesothelioma cells from patients with malignant epithelial mesothelioma.
Purification	Purified IgM
Conjugation	Unconjugated

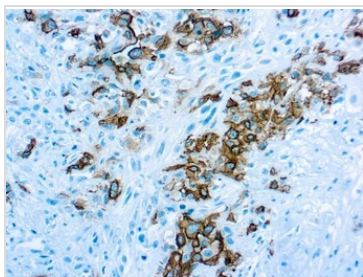
Note

For laboratory research use only. Not for any clinical, therapeutic, or diagnostic use in humans or animals. Not for animal or human consumption.

Purchasers shall not, and agree not to enable third parties to, analyze, copy, reverse engineer or otherwise attempt to determine the structure or sequence of the product.



For full product information, images and publications, please visit our [website](#).

DATA IMAGES

GTX22383 IHC-P Image

IHC-P analysis of human mesothelioma tissue using GTX22383 Mesothelioma antibody [HBME-1].



For full product information, images and publications, please visit our [website](#).