

Myelin basic protein antibody

Cat. No. GTX22404

Host	Rabbit
Clonality	Polyclonal
Isotype	IgG
Applications	IHC-P, IHC-Fr, IHC
Reactivity	Human, Mouse

References (3)

Package

250 µl

Applications

Application Note

*Optimal dilutions/concentrations should be determined by the researcher.

Suggested dilution	Recommended dilution
IHC-P	1:20-1:40
IHC-Fr	Assay dependent
IHC	Assay dependent

Not tested in other applications.

Product Note

This antibody reacts with human myelin basic protein and oligodendrocytes of white matter in brain and spinal cord. Grey matter stains weakly. This antibody also stains peripheral nerves.

Properties

Form	Liquid
Buffer	PBS
Preservative	0.09% Sodium azide
Storage	Store as concentrated solution. Centrifuge briefly prior to opening vial. Store at 4°C.
Concentration	Batch dependent (Please refer to the vial label for the specific concentration.)
Immunogen	Human myelin basic protein isolated from normal human brain.
Purification	Purified IgG
Conjugation	Unconjugated

Note

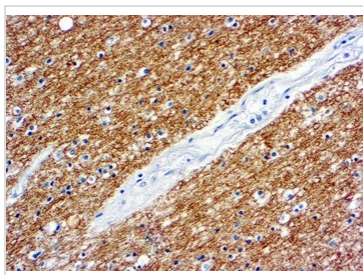
For laboratory research use only. Not for any clinical, therapeutic, or diagnostic use in humans or animals. Not for animal or human consumption.

Purchasers shall not, and agree not to enable third parties to, analyze, copy, reverse engineer or otherwise attempt to determine the structure or sequence of the product.



For full product information, images and publications, please visit our [website](#).

DATA IMAGES



GTX22404 IHC-P Image

IHC-P analysis of human brain tissue using GTX22404 Myelin basic protein antibody.



For full product information, images and publications, please visit our [website](#).