

Albumin antibody

Cat. No. GTX22406

Host	Rabbit
Clonality	Polyclonal
Isotype	IgG
Applications	IHC-P
Reactivity	Human

Package
1 ml

Applications

Application Note

*Optimal dilutions/concentrations should be determined by the researcher.

Suggested dilution	Recommended dilution
IHC-P	1:50-1:100

Not tested in other applications.

Product Note

This antibody reacts with human albumin. This antibody is essentially free of other rabbit serum proteins. Specificity is determined by Ouchterlony double diffusion (ODD) and immunoelectrophoresis (IEP) versus human serum and human albumin.

Properties

Form	Liquid
Buffer	PBS
Preservative	0.09% Sodium azide
Storage	Store as concentrated solution. Centrifuge briefly prior to opening vial. Store at 4°C.
Concentration	Batch dependent (Please refer to the vial label for the specific concentration.)
Immunogen	Purified human albumin.
Purification	Purified IgG
Conjugation	Unconjugated

Note

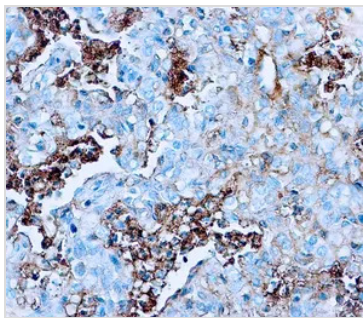
For laboratory research use only. Not for any clinical, therapeutic, or diagnostic use in humans or animals. Not for animal or human consumption.

Purchasers shall not, and agree not to enable third parties to, analyze, copy, reverse engineer or otherwise attempt to determine the structure or sequence of the product.



For full product information, images and publications, please visit our [website](#).

DATA IMAGES

**GTX22406 IHC-P Image**

IHC-P analysis of human liver tissue using GTX22406 Albumin antibody.



For full product information, images and publications, please visit our [website](#).