

Rabbit Anti-Human IgG antibody

Cat. No. GTX22410

Host	Rabbit
Clonality	Polyclonal
Isotype	IgG
Applications	IHC-P
Reactivity	Human

Package
1 ml

Applications

Application Note

*Optimal dilutions/concentrations should be determined by the researcher.

Suggested dilution	Recommended dilution
IHC-P	1:200-1:500

Not tested in other applications.

Product Note This antibody reacts with γ -chains of human IgG. Nonspecific antibodies have been removed by solid-phase adsorption.

Properties

Form	Liquid
Buffer	PBS
Preservative	0.09% Sodium azide
Storage	Store as concentrated solution. Centrifuge briefly prior to opening vial. Store at 4°C.
Concentration	Batch dependent (Please refer to the vial label for the specific concentration.)
Immunogen	IgG isolated from a pool of normal human sera.
Purification	Purified IgG
Conjugation	Unconjugated

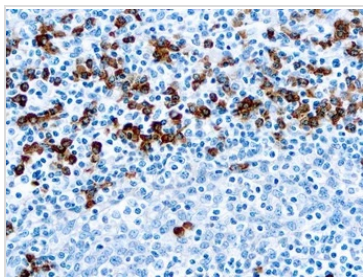
Note

For laboratory research use only. Not for any clinical, therapeutic, or diagnostic use in humans or animals. Not for animal or human consumption.

Purchasers shall not, and agree not to enable third parties to, analyze, copy, reverse engineer or otherwise attempt to determine the structure or sequence of the product.



For full product information, images and publications, please visit our [website](#).

DATA IMAGES

GTX22410 IHC-P Image

IHC-P analysis of human tonsil tissue using GTX22410 Human IgG antibody.



For full product information, images and publications, please visit our [website](#).