

# Rabbit Anti-Rat IgG antibody (HRP)

**Cat. No. GTX224125-01**

<b>Host</b>	Rabbit
<b>Clonality</b>	Polyclonal
<b>Isotype</b>	IgG
<b>Application</b>	WB
<b>Reactivity</b>	Rat

Reference ( 4 )  
Package  
1 ml

## APPLICATION

### Application Note

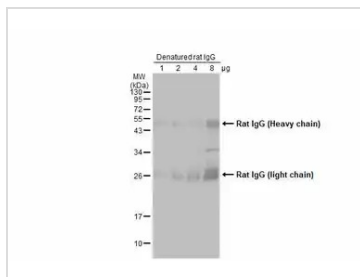
Recommended Starting Dilutions: WB: Use at 1:5,000 to 1:10,000 dilution with normal ECL reagent and more than 1:100,000 dilution with ECL plus or other high sensitive ECL reagent. Optimal working dilutions should be determined experimentally by the end user.

## PROPERTIES

<b>Form</b>	Liquid
<b>Buffer</b>	0.05M Tris, 0.15M NaCl, 1%BSA
<b>Preservative</b>	0.025% ProClin 300
<b>Storage</b>	Store as concentrated solution. Centrifuge briefly prior to opening vial. For short-term storage (1-2 weeks), store at 4°C. For long-term storage, aliquot and store at -20°C or below. Avoid multiple freeze-thaw cycles.
<b>Concentration</b>	0.25 mg/ml (Please refer to the vial label for the specific concentration.)
<b>Immunogen</b>	Highly purified whole rat IgG
<b>Purification</b>	Purified by antigen-affinity chromatography.
<b>Conjugation</b>	Horseradish peroxidase(HRP)
<b>Note</b>	For laboratory research use only. Not for any clinical, therapeutic, or diagnostic use in humans or animals. Not for animal or human consumption.  Purchasers shall not, and agree not to enable third parties to, analyze, copy, reverse engineer or otherwise attempt to determine the structure or sequence of the product.



For full product information, images and publications, please visit our [website](#).

**DATA IMAGES**

**GTX224125-01 WB Image**

Denatured rat IgG were separated by 12% SDS-PAGE, and the membrane was blotted with Rat IgG antibody (HRP) (GTX224125-01) diluted at 1:5000.



For full product information, images and publications, please visit our [website](#).