

Her2 / ErbB2 antibody

Cat. No. GTX22428

Host	Rabbit
Clonality	Polyclonal
Isotype	IgG
Applications	WB, IHC-P, IP
Reactivity	Human, Mouse, Rat

Package
1 ml

Applications

Application Note

*Optimal dilutions/concentrations should be determined by the researcher.

Suggested dilution	Recommended dilution
WB	Assay dependent
IHC-P	Assay dependent
IP	Assay dependent

Not tested in other applications.

Calculated MW 138 kDa. ([Note](#))

Properties

Form	Liquid
Buffer	PBS, 0.2% Gelatin
Preservative	0.1% Sodium azide
Storage	Store as concentrated solution. Centrifuge briefly prior to opening vial. Store at 4°C. DO NOT FREEZE.
Concentration	0.2 mg/ml (Please refer to the vial label for the specific concentration.)
Immunogen	Peptide mapping to the carboxy terminus of human Neu (HER2 or ErbB-2).
Purification	Purified by affinity chromatography
Conjugation	Unconjugated

Note

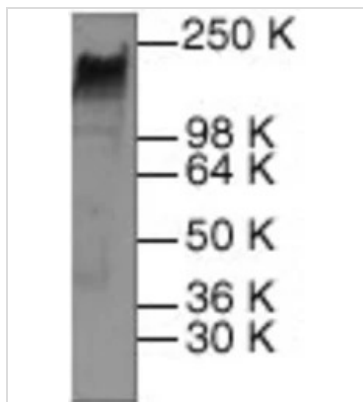
For laboratory research use only. Not for any clinical, therapeutic, or diagnostic use in humans or animals. Not for animal or human consumption.

Purchasers shall not, and agree not to enable third parties to, analyze, copy, reverse engineer or otherwise attempt to determine the structure or sequence of the product.



For full product information, images and publications, please visit our [website](#).

DATA IMAGES

**GTX22428 WB Image**

WB analysis of SK-BR-3 whole cell lysates using GTX22428 Her2 / ErbB2 antibody.



For full product information, images and publications, please visit our [website](#).