

ADAM8 antibody

Cat. No. GTX22475

Host	Goat
Clonality	Polyclonal
Isotype	IgG
Applications	WB
Reactivity	Human

Package
50 µg

Applications

Application Note

Western Blot - Approx 90kDa band seen in Human Brain lysate. Recommended for use at 1.0-3.0ug/ml.

Calculated MW 89 kDa. ([Note](#))

Properties

Form	Liquid
Buffer	TBS, 0.5% BSA
Preservative	0.02% Sodium azide
Storage	Store as concentrated solution. Centrifuge briefly prior to opening vial. For short-term storage (1-2 weeks), store at 4°C. For long-term storage, aliquot and store at -20°C or below. Avoid multiple freeze-thaw cycles.
Concentration	0.5 mg/ml (Please refer to the vial label for the specific concentration.)
Immunogen	Synthetic peptide: QRKQGAGAPTAP, corresponding to C terminal amino acids 813-824 of ADAM8.
Purification	IgG fraction Purified from goat serum by ammonium sulphate precipitation followed by antigen affinity chromatography using the immunizing peptide.
Conjugation	Unconjugated

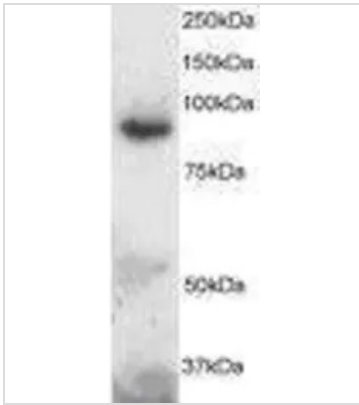
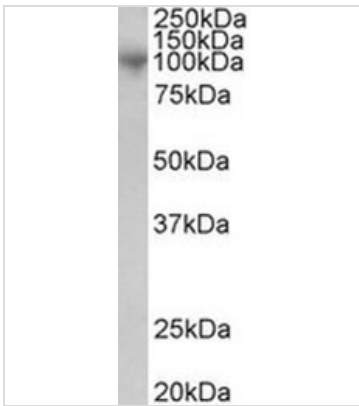
Note

For laboratory research use only. Not for any clinical, therapeutic, or diagnostic use in humans or animals. Not for animal or human consumption.

Purchasers shall not, and agree not to enable third parties to, analyze, copy, reverse engineer or otherwise attempt to determine the structure or sequence of the product.



For full product information, images and publications, please visit our [website](#).

DATA IMAGES

GTX22475 WB Image

GTX22475 WB Image

Western blot analysis of MS2 (ADAM8, CD156) in human bone marrow lysate using GTX22475 at 1 ug/ ml.



For full product information, images and publications, please visit our [website](#).