

# PAK1 ( phospho Thr423 ) / PAK2 ( phospho Thr402 ) / PAK3 ( phospho Thr436 ) antibody

**Cat. No. GTX22477**

<b>Host</b>	Rabbit
<b>Clonality</b>	Polyclonal
<b>Isotype</b>	IgG
<b>Applications</b>	WB, Dot, ELISA
<b>Reactivity</b>	Human

**Package**

50 µg

## Applications

### Application Note

\*Optimal dilutions/concentrations should be determined by the researcher.

Suggested dilution	Recommended dilution
WB	1:500-1:2000
Dot	Assay dependent
ELISA	1:4000-1:20000

Not tested in other applications.

### Product Note

This phospho specific polyclonal antibody is specific for phosphorylated pT423 of Human PAK 1/2/3. Reactivity with non-phosphorylated PAK 1/2/3 is less than 1% by ELISA.

## Properties

<b>Form</b>	Liquid
<b>Buffer</b>	20mM Potassium Phosphate, 150mM NaCl
<b>Preservative</b>	0.01% Sodium azide
<b>Storage</b>	Store as concentrated solution. Centrifuge briefly prior to opening vial. For short-term storage (1-2 weeks), store at 4°C. For long-term storage, aliquot and store at -20°C or below. Avoid multiple freeze-thaw cycles.
<b>Concentration</b>	1 mg/ml (Please refer to the vial label for the specific concentration.)
<b>Immunogen</b>	Human PAK 1/2/3 phospho peptide corresponding to a region of the human protein conjugated to KLH.
<b>Purification</b>	Purified by antigen-affinity chromatography. From serum
<b>Conjugation</b>	Unconjugated



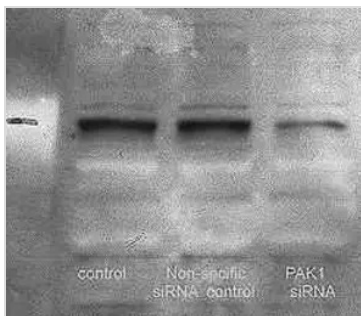
For full product information, images and publications, please visit our [website](#).

For laboratory research use only. Not for any clinical, therapeutic, or diagnostic use in humans or animals. Not for animal or human consumption.

## Note

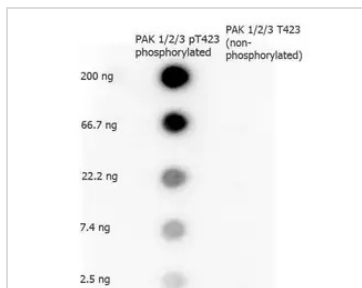
Purchasers shall not, and agree not to enable third parties to, analyze, copy, reverse engineer or otherwise attempt to determine the structure or sequence of the product.

## DATA IMAGES



### GTX22477 WB Image

Western blot probing with PAK1 ( phospho Thr423 ) / PAK2 ( phospho Thr402 ) / PAK3 ( phospho Thr436 ) antibody (GTX22477). The major band is at 65 kDa and weaker bands can be detected at 90 and 100 kDa. This picture was kindly submitted by Sue Thomas as part of her review.



### GTX22477 Dot Image

Dot blot analysis of phosphorylated and non-phosphorylated forms of the immunizing peptide using GTX22477 PAK1 ( phospho Thr423 ) / PAK2 ( phospho Thr402 ) / PAK3 ( phospho Thr436 ) antibody. Dilution : 1:1000



For full product information, images and publications, please visit our [website](https://www.genetex.com).