

Merlin (phospho Ser518) antibody

Cat. No. GTX22478

Host	Rabbit
Clonality	Polyclonal
Isotype	IgG
Applications	WB, ICC/IF, IHC-P, ELISA, Multiplexing
Reactivity	Mouse

Package
50 µg

Applications

Application Note

*Optimal dilutions/concentrations should be determined by the researcher.

Suggested dilution	Recommended dilution
WB	1:500-1:2000
ICC/IF	Assay dependent
IHC-P	Assay dependent
ELISA	1:200000
Multiplexing	Assay dependent

Not tested in other applications.

Calculated MW 70 kDa. ([Note](#))

Product Note This phospho-specific polyclonal antibody is specific for phosphorylated pS518 of human NF2 (neurofibromatosis 2 gene product). Reactivity with non-phosphorylated Human NF2 (Merlin) is minimal by ELISA.

Properties

Form	Liquid
Buffer	20mM Potassium Phosphate, 150mM NaCl
Preservative	0.01% Sodium azide
Storage	Store as concentrated solution. Centrifuge briefly prior to opening vial. For short-term storage (1-2 weeks), store at 4°C. For long-term storage, aliquot and store at -20°C or below. Avoid multiple freeze-thaw cycles.
Concentration	1 mg/ml (Please refer to the vial label for the specific concentration.)
Immunogen	Human NF2 (Merlin) phospho-peptide corresponding to a region of the human protein surrounding S518 and conjugated to KLH.
Purification	Purified by antigen-affinity chromatography. From serum



For full product information, images and publications, please visit our [website](#).

Conjugation

Unconjugated

Note

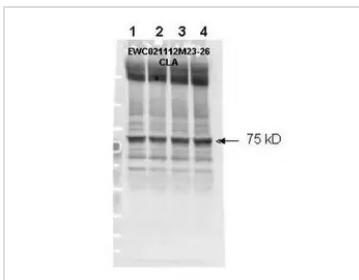
For laboratory research use only. Not for any clinical, therapeutic, or diagnostic use in humans or animals. Not for animal or human consumption.

Purchasers shall not, and agree not to enable third parties to, analyze, copy, reverse engineer or otherwise attempt to determine the structure or sequence of the product.

DATA IMAGES

**GTX22478 WB Image**

Affinity purified phospho-specific antibody to NF2 (Merlin) at pS518 (GTX22478) was used at a 1:1000 dilution to detect NF2 by Western blot. Approximately 12 ul of a mouse cardiac myocyte lysate was loaded per lane on a 4-20% Criterion gel for SDS-PAGE. Samples were either mock treated (lane 1) or CLA treated at 4nM, 20 nM or 100 nM (lanes 2, 3 and 4 respectively) for 45'. After washing, a 1:5,000 dilution of HRP conjugated Gt-a-Rabbit IgG (GTX27090) preceded color development using Amersham's substrate system. Other detection methods will yield similar results.

**GTX22478 WB Image**

WB analysis of mouse cardiac myocyte lysate using GTX22478 Merlin (phospho Ser518) antibody.

Lane 1 : Mock

Lane 2 : 4 nM CLA-treated cells

Lane 3 : 20 nM CLA-treated cells

Lane 4 : 100 nM CLA-treated cells

Dilution : 1:1000



For full product information, images and publications, please visit our [website](#).