

p63 antibody

Cat. No. GTX22506

Host	Rabbit
Clonality	Polyclonal
Isotype	IgG
Applications	WB, ELISA, IHC
Reactivity	Human, Mouse

Package
100 µg

Applications

Application Note

*Optimal dilutions/concentrations should be determined by the researcher.

Suggested dilution	Recommended dilution
WB	1:250
ELISA	1:25,000
IHC	1:50

Not tested in other applications.

Calculated MW 77 kDa. ([Note](#))

Product Note This antibody is specific for p51A. It does not cross react with p51B

Properties

Form	Liquid
Buffer	10mM KHPO ₄ , 140mM NaCl, 0.1% BSA
Preservative	0.1% Sodium azide
Storage	Store as concentrated solution. Centrifuge briefly prior to opening vial. For short-term storage (1-2 weeks), store at 4°C. For long-term storage, aliquot and store at -20°C or below. Avoid multiple freeze-thaw cycles.
Concentration	1 mg/ml (Please refer to the vial label for the specific concentration.)
Immunogen	Synthetic peptide C-423EPRRETPKQSDVFFRHSKPPNRS445 corresponding to C-terminal of human p51A
Purification	Purified by affinity chromatography
Conjugation	Unconjugated



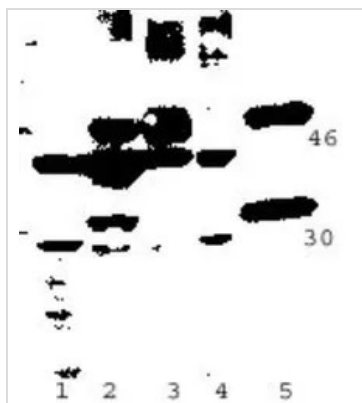
For full product information, images and publications, please visit our [website](#).

For laboratory research use only. Not for any clinical, therapeutic, or diagnostic use in humans or animals. Not for animal or human consumption.

Note

Purchasers shall not, and agree not to enable third parties to, analyze, copy, reverse engineer or otherwise attempt to determine the structure or sequence of the product.

DATA IMAGES



GTx22506 WB Image

WB analysis of various sample lysates using GTx22506 p63 antibody.

Lane 1 : Jurkat
Lane 2 : Mouse lung
Lane 3 : mouse thymus
Lane 4 : mouse lung
Lane 5 : mouse heart



For full product information, images and publications, please visit our [website](https://www.genetex.com).