

CD22 antibody [MEM-01]

Cat. No. GTX22526

Host	Mouse
Clonality	Monoclonal
Isotype	IgG1
Applications	WB, FCM, IP
Reactivity	Human, Primate

Package
100 µg

Applications

Application Note

*Optimal dilutions/concentrations should be determined by the researcher.

Suggested dilution	Recommended dilution
WB	Assay dependent
FCM	Assay dependent
IP	Assay dependent

Not tested in other applications.

Calculated MW 95 kDa. ([Note](#))**Product Note** This antibody recognizes uniquely epitope "E"; it does not cross-block antibodies RFB-4, CLB22/1 and CLB-BLy1.

Properties

Form	Liquid
Buffer	PBS
Preservative	15mM Sodium azide
Storage	Store as concentrated solution. Centrifuge briefly prior to opening vial. Store at 4°C. DO NOT FREEZE.
Concentration	1 mg/ml (Please refer to the vial label for the specific concentration.)
Immunogen	Raji Burkitt's lymphoma cell line
Purification	Protein A purified
Conjugation	Unconjugated

Note

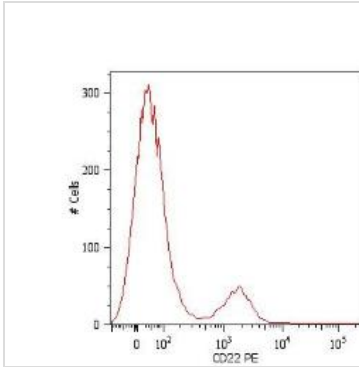
For laboratory research use only. Not for any clinical, therapeutic, or diagnostic use in humans or animals. Not for animal or human consumption.

Purchasers shall not, and agree not to enable third parties to, analyze, copy, reverse engineer or otherwise attempt to determine the structure or sequence of the product.



For full product information, images and publications, please visit our [website](#).

DATA IMAGES



GTX22526 FCM Image

Surface staining of human peripheral blood cells with anti-CD22: PE (GTX78322). Cells in the lymphocyte gate were used for analysis.



For full product information, images and publications, please visit our [website](#).