

## Cytokeratin 5 + 18 antibody [C-50]

**Cat. No. GTX22535**

<b>Host</b>	Mouse
<b>Clonality</b>	Monoclonal
<b>Isotype</b>	IgG1
<b>Applications</b>	WB, ICC/IF, IHC-P, IP
<b>Reactivity</b>	Human, Mouse, Rat, Sheep, Bovine, Dog, Hamster, Pig

References ( 2 )

Package

100 µg

## Applications

**Application Note**

\*Optimal dilutions/concentrations should be determined by the researcher.

Suggested dilution	Recommended dilution
WB	Assay dependent
ICC/IF	Assay dependent
IHC-P	Assay dependent
IP	Assay dependent

Not tested in other applications.

**Product Note** We do not recommend use of this product for Chicken,Xenopus samples.

## Properties

<b>Form</b>	Liquid
<b>Buffer</b>	PBS
<b>Preservative</b>	15mM Sodium azide
<b>Storage</b>	Store as concentrated solution. Centrifuge briefly prior to opening vial. Store at 4°C. DO NOT FREEZE.
<b>Concentration</b>	1 mg/ml (Please refer to the vial label for the specific concentration.)
<b>Immunogen</b>	Cytoskeleton preparation from HeLa cells.
<b>Purification</b>	Protein A purified
<b>Conjugation</b>	Unconjugated

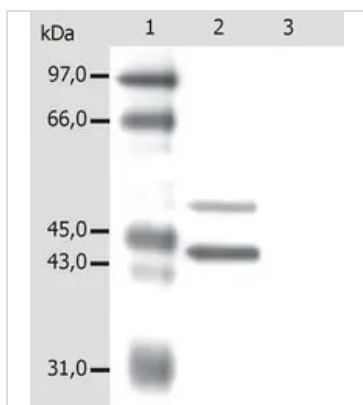
**Note**

For laboratory research use only. Not for any clinical, therapeutic, or diagnostic use in humans or animals. Not for animal or human consumption.

Purchasers shall not, and agree not to enable third parties to, analyze, copy, reverse engineer or otherwise attempt to determine the structure or sequence of the product.

For full product information, images and publications, please visit our [website](#).

DATA IMAGES



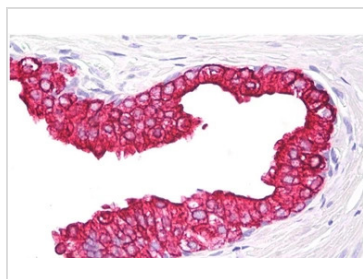
**GTX22535 WB Image**

WB analysis of MCF-7 cell lysates using GTX22535 Cytokeratin 5 + 18 antibody [C-50].

Lane 1 : MW standard

Lane 2 : GTX22535

Lane 3 : Isotype mouse IgG1 control



**GTX22535 IHC-P Image**

IHC-P analysis of human prostate tissue using GTX22535 Cytokeratin 5 + 18 antibody [C-50].



For full product information, images and publications, please visit our [website](#).