

# PAK1 antibody

**Cat. No. GTX22551**

<b>Host</b>	Rabbit
<b>Clonality</b>	Polyclonal
<b>Isotype</b>	IgG
<b>Applications</b>	WB, IP
<b>Reactivity</b>	Human

**Package**  
50 µg

## Applications

### Application Note

For WB: Use at a dilution of 1:4,500 - 1:5,500. The use of this product can also be used for IP but not yet reported. Optimal dilutions/concentrations should be determined by the researcher.

**Calculated MW** 61 kDa. ( [Note](#) )

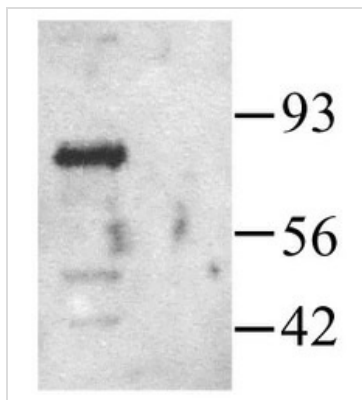
## Properties

<b>Form</b>	Liquid
<b>Buffer</b>	PBS
<b>Preservative</b>	0.1% Sodium azide
<b>Storage</b>	Store as concentrated solution. Centrifuge briefly prior to opening vial. For short-term storage (1-2 weeks), store at 4°C. For long-term storage, aliquot and store at -20°C or below. Avoid multiple freeze-thaw cycles.
<b>Concentration</b>	1 mg/ml (Please refer to the vial label for the specific concentration.)
<b>Immunogen</b>	Recombinant protein - human PAK 1
<b>Purification</b>	Protein A affinity purified From polyclonal serum
<b>Conjugation</b>	Unconjugated
<b>Note</b>	For laboratory research use only. Not for any clinical, therapeutic, or diagnostic use in humans or animals. Not for animal or human consumption.  Purchasers shall not, and agree not to enable third parties to, analyze, copy, reverse engineer or otherwise attempt to determine the structure or sequence of the product.



For full product information, images and publications, please visit our [website](#).

## DATA IMAGES



### GTX22551 WB Image

Human PAK1 detected by Western blot in transfected HEK293 cells (left lane)



For full product information, images and publications, please visit our [website](https://www.genetex.com).