

# RGS3 antibody

**Cat. No. GTX22564**

<b>Host</b>	Rabbit
<b>Clonality</b>	Polyclonal
<b>Isotype</b>	IgG
<b>Applications</b>	WB, IP
<b>Reactivity</b>	Human

**Package**

50 µg

## Applications

### Application Note

For WB: Use at a dilution of 1:4,500 - 1:5,500. The use of this product can also be used for IP but it is not yet reported. Optimal dilutions/concentrations should be determined by the researcher.

**Calculated MW** 132 kDa. ([Note](#))

## Properties

<b>Form</b>	Liquid
<b>Buffer</b>	PBS
<b>Preservative</b>	0.1% Sodium azide
<b>Storage</b>	Store as concentrated solution. Centrifuge briefly prior to opening vial. For short-term storage (1-2 weeks), store at 4°C. For long-term storage, aliquot and store at -20°C or below. Avoid multiple freeze-thaw cycles.
<b>Concentration</b>	1 mg/ml (Please refer to the vial label for the specific concentration.)
<b>Immunogen</b>	Recombinant fragment - amino acids 401-519 of human RGS 3
<b>Purification</b>	Protein A affinity purified From polyclonal serum
<b>Conjugation</b>	Unconjugated

### Note

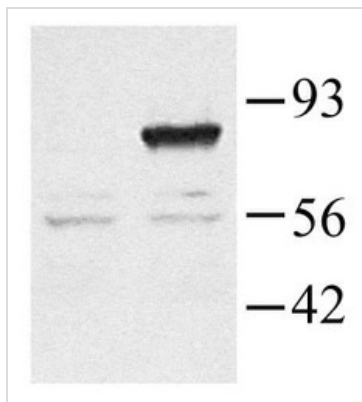
For laboratory research use only. Not for any clinical, therapeutic, or diagnostic use in humans or animals. Not for animal or human consumption.

Purchasers shall not, and agree not to enable third parties to, analyze, copy, reverse engineer or otherwise attempt to determine the structure or sequence of the product.



For full product information, images and publications, please visit our [website](#).

## DATA IMAGES



### GTX22564 WB Image

RGS3 detected by Western blot in transfected HEK293 cells (right lane)



For full product information, images and publications, please visit our [website](#).