

CD42b antibody [HIP1]

Cat. No. GTX22578

Host	Mouse
Clonality	Monoclonal
Isotype	IgG1
Application	IHC-Fr, FACS
Reactivity	Human, Primate

Package

100 µg

APPLICATION

Application Note

*Optimal dilutions/concentrations should be determined by the researcher.

Suggested dilution	Recommended dilution
IHC-Fr	Assay dependent
FACS	Assay dependent

Not tested in other applications.

Calculated MW 72 kDa. ([Note](#))

Product Note This antibody reacts with CD42b (GPIb alpha).

PROPERTIES

Form	Liquid
Buffer	PBS
Preservative	15mM Sodium azide
Storage	Store as concentrated solution. Centrifuge briefly prior to opening vial. Store at 4°C. DO NOT FREEZE.
Concentration	1 mg/ml (Please refer to the vial label for the specific concentration.)
Immunogen	Peripheral blood mononuclear cells of a patient suffering with CLL.
Purification	Protein A purified
Conjugation	Unconjugated

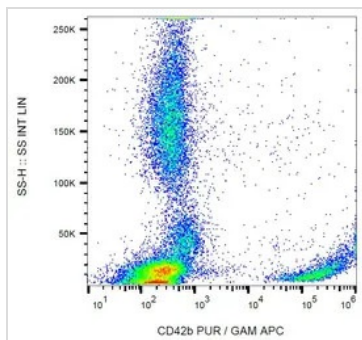
Note

For laboratory research use only. Not for any clinical, therapeutic, or diagnostic use in humans or animals. Not for animal or human consumption.

Purchasers shall not, and agree not to enable third parties to, analyze, copy, reverse engineer or otherwise attempt to determine the structure or sequence of the product.



For full product information, images and publications, please visit our [website](#).

DATA IMAGES

GTX22578 FACS Image

FACS analysis of human peripheral blood using GTX22578 CD42b antibody [HIP1].



For full product information, images and publications, please visit our [website](#).