

HLA-DQ1 + HLA-DQ3 antibody [HL-37]

Cat. No. GTX22600

Host	Mouse
Clonality	Monoclonal
Isotype	IgG3
Applications	WB, FCM, IP
Reactivity	Human, Pig

Package
100 µg

Applications

Application Note

*Optimal dilutions/concentrations should be determined by the researcher.

Suggested dilution	Recommended dilution
WB	Assay dependent
FCM	Assay dependent
IP	Assay dependent

Not tested in other applications.

Product Note

This antibody reacts with polymorphic determinant on human HLA-DQ1 and HLA-DQ3 molecules (recognized epitope was found on isolated beta chain of DQ1), but does not react with HLA-DQ2.

Properties

Form	Liquid
Buffer	PBS
Preservative	15mM Sodium azide
Storage	Store as concentrated solution. Centrifuge briefly prior to opening vial. Store at 4°C. DO NOT FREEZE.
Concentration	1 mg/ml (Please refer to the vial label for the specific concentration.)
Immunogen	Burkitt's lymphoma cell line Raji.
Purification	Protein A purified
Conjugation	Unconjugated

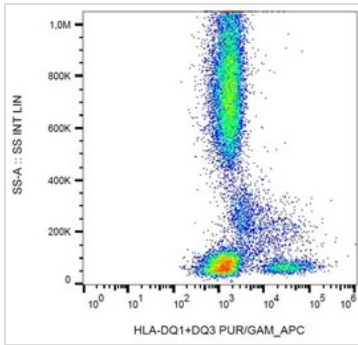
Note

For laboratory research use only. Not for any clinical, therapeutic, or diagnostic use in humans or animals. Not for animal or human consumption.

Purchasers shall not, and agree not to enable third parties to, analyze, copy, reverse engineer or otherwise attempt to determine the structure or sequence of the product.



For full product information, images and publications, please visit our [website](#).

DATA IMAGES

GTX22600 FCM Image

FACS analysis of human peripheral blood using GTX22600 HLA-DQ1 + HLA-DQ3 antibody [HL-37].



For full product information, images and publications, please visit our [website](#).